

SUMMER **2021**_



FREE TO KEEP GOING



VISION + MISSION

In essence, going to the mountains means creating more room for freedom and self-expression.

Karpos is focused on developing gear that allows for the expansion of this space.

Karpos is for people who go to the mountains to push their limits.







INDEX

FREE SPIRIT	PAG. 07
HIGHEST	PAG. 19
DYNAMIC	PAG. 27
SEVERE	PAG. 47
FREE SPIRIT W	PAG. 87
HIGHEST W	PAG. 97
DYNAMIC W	PAG. 103
SEVERE W	PAG. 123
ADVENTURE BIKE	PAG. 165
ADVENTURE BIKE W	PAG. 185
ACCESSORIES	PAG. 197



Karpos is color. Our use of color is unorthodox,
as is our way of thinking.



A man with long brown hair and sunglasses is hiking through a forest. He is wearing an orange t-shirt with the word "NOBB" printed on it, olive green cargo pants, and a black backpack. He has a climbing harness and a blue rope attached to his gear. He is stepping on a rock. The background is a dense forest with green foliage and tree trunks.

FREE SPIRIT

N /2501090

GENZIANELLA T-SHIRT

WEIGHT_ 175 gr
FIT_REGULAR
SIZE_S-3XL

FABRICS
COTTON FADED



001
DARK GREY MELANGE



FABRIC
• 95% cotton / 5% elastane T-shirt.



320
QUETZAL GREEN



860
AURORA RED



366
INSIGNIA BLUE PRINT 1



/2501092 

BOTTON D'ORO T-SHIRT

WEIGHT_ 175gr
FIT_REGULAR
SIZE_S-3XL

FABRICS
COTTON



403
DRESDEN BLUE PRNT 3



FABRIC

• 95% cotton / 5% elastane T-shirt.

855
SCARLET IBIS PRINT 2



366
INSIGNIA BLUE PRINT 1



403
DRESDEN BLUE PRNT 3



855
SCARLET IBIS PRINT 2



 /2500976

715
OLIVE OIL



GIGLIO
T-SHIRT

WEIGHT_ 175 gr
FIT_ REGULAR
SIZE_ S-3XL

FABRICS
COTTON FADED



INSULATION

1



WATER PROTECTION

0



WIND PROTECTION

0



BREATHABILITY

4



PACKABLE

3

FABRIC

- 100% cotton T-shirt.

455
MAROCCAN BLUE



338
DARK GREEN



002
BLACK



/2501107 

ASTRO ALPINO T-SHIRT

WEIGHT_ 175gr
FIT_ REGULAR
SIZE_ S-3XL

FABRICS
COTTON



403
DRESDEN BLUE



FABRIC

• 95% cotton / 5% elastane T-shirt.

855
SCARLET IBIS



088
ASPHALT

FAGGIO PANT

WEIGHT_ 370 gr
FIT_LOOSE
SIZE_ 44-60

FABRICS
COTTON FADED



FABRIC

- Garment-dyed cotton pant.

FEATURES

- Elastic waist with button fly.
- Open front pockets with coin pocket.
- Open back pockets.
- Printed inserts.
- Draw cord at bottom of leg.

361
GREEN HAY



377
SILVER SAGE



001
BLUE JEANS

/2501105 

FAGGIO JEANS PANT

WEIGHT_ 514gr
FIT_ LOOSE
SIZE_ 44-60

FABRICS
COTTON



FABRIC

- Stretch denim pant.

FEATURES

- Elastic waist with button fly.
- Open front pockets with coin pocket.
- Open back pockets.
- Draw cord at bottom of leg.



 /2500993

088
ASPHALT

NOGHERA PANT

WEIGHT_ 340 gr
FIT_ REGULAR
SIZE_ 44-56

FABRICS
COTTON



FABRIC

- Garment-dyed cotton pant.

FEATURES

- Elastic waist with button fly.
- Open front pockets with small coin pocket.
- Open back pockets.
- Printed panels.
- Draw cord at bottom.

377
SILVER SAGE



361
GREEN HAY



619
BURNT HENNA



001
BLUE JEANS

/2501103 

NOGHERA JEANS PANT

WEIGHT_ 500 gr
FIT_ REGULAR
SIZE_ 44-60

FABRICS
COTTON



INSULATION

2



WATER PROTECTION

0



WIND PROTECTION

0



BREATHABILITY

4



PACKABLE

4

CONCEPT

- Stretch denim pant..

FABRIC

- Elastic waist with button fly.
- Open front pockets with coin pocket.
- Open back pockets.
- Draw cord at bottom of leg.



 /2500994

088
ASPHALT

NOGHERA BERMUDA

WEIGHT_ 225 gr
FIT_ REGULAR
SIZE_ 44-56
DWR
FABRICS
COTTON



FABRIC

- Garment-dyed cotton Bermuda short.

FEATURES

- Elastic waist with button fly.
- Open front pockets with small coin pocket.
- Open back pockets.
- Printed panels.

377
SILVER SAGE

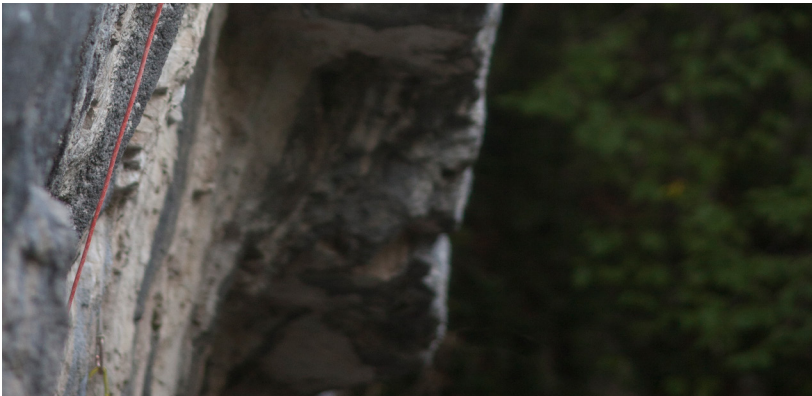


361
GREEN HAY



619
BURNT HENNA







If you stay where you've always been, you'll see what you've always seen. If you go where you've never been before, maybe you'll be able to discover something new.

A close-up photograph of a rock face with horizontal layers of light grey and reddish-brown rock. A blue rope is visible on the left side, and a dark, rocky area is in the upper right background.

HIGHEST

K-PERFORMANCE SPORT CLIMBING PANT

WEIGHT_ 302 gr
FIT_ REGULAR
SIZE_ 44-60
W/P_ DWR
FABRICS_
K-STRETCH
CORDURA



FABRIC

- Made with a single two-way stretch fabric that ensures excellent freedom of movement and maximum breathability on every climb. The fabric is also extremely abrasion resistant, thanks to a high percentage of Cordura®, and offers maximum UV protection and a DWR treatment. The yoke is made of a lightweight ripstop fabric with two-way stretch for even greater breathability and freedom of movement.

FEATURES

- Stretchy rib-knit waist for excellent fit.
- Waist designed to be as flat as possible, for use with harness.
- Adjustable draw cord inside waistband.
- Fly with button and Velcro closure.
- Two open pockets in front.
- Two open back pockets.
- Small zippered pocket on right leg.
- Draw cord at bottom.
- Brush loop on side.

328
DEEP TEAL



092
HARBOR MIST



366
INSIGNIA BLUE



002
BLACK



/2500984



K-PERFORMANCE ROCK CLIMBING PANT

WEIGHT_ 302 gr
FIT_SLIM
SIZE_44-60
W/P_ DWR
FABRICS
K-STRETCH
CORDURA



2



WATER PROTECTION

2



WIND PROTECTION

2



BREATHABILITY

4



PACKABLE

3

092

HARBOR MIST/TRADEWINS



FABRIC

- Made with two-way stretch fabrics with a high percentage of Cordura® to ensure high resistance against rubbing and abrasion, and with high UV protection and a DWR treatment. The front and upper part of the back feature a heavier fabric, while the rest is made with a lighter, more breathable fabric.

FEATURES

- Stretchy rib-knit waist for excellent fit.
- Waist designed to be as flat as possible, for use with harness.
- Adjustable draw cord inside waistband.
- Fly with button and Velcro closure.
- Zippered front pockets, bonded to reduce thickness for greater comfort when using harness.
- Small zippered pocket on right leg.
- Zip at bottom with gusset for adjustment.

366

INSIGNIA BLUE



328

DEEP TEAL



K-PERFORMANCE HYBRID JACKET

WEIGHT_ 366 gr
FIT_ REGULAR
SIZE_ S-3XL
W/P_ DWR
FABRICS
K-DRY
CORPORA



FABRIC

- Jacket made of lightweight windproof nylon fabric with DWR treatment outside. A stretchy, breathable fabric is used on the underside of the sleeves to ensure maximum freedom of movement. The inner part is made with an extremely light fleece with Octa technology, which, thanks to the particular shape of the fibers, ensures greater warmth, lightness, breathability and compactibility compared to other fleeces of equal weight.

FEATURES

- Full zip on front with wind flap and garage.
- Two zippered chest pockets with small cellphone pocket inside.
- Hood with draw-cord adjustment on back.
- Draw-cord adjustment at bottom.
- Lightweight and stretchy cuffs on sleeves.



250
TRADEWINS

/2500988 

K-PERFORMANCE CLIMBING FLEECE

##WEIGHT_ 507 gr
##FIT_SLIM
##SIZE_ S-3XL
##W/P
##FABRICS_
THERMOFLEECE
CORDURA



FABRIC

- Made with a single two-way stretch fabric with a high Cordura® content for outstanding durability.

FEATURES

- Full-length zipper.
- Two chest pockets with zippers that can also be used for ventilation.
- Keychain hook inside left pocket.
- Shaped hood.
- Draw-cord adjustment at bottom.
- Lightweight and stretchy ripstop cuffs on sleeves.



K-PERFORMANCE T-SHIRT

#WEIGHT_ 102 gr
#FIT_REGULAR
#SIZE_S-3XL
#W/P_DWR
#FABRICS
K-DRY



FABRIC

- Made with extremely lightweight, durable, stretchy and comfortable fabric, offering high UV protection and a natural look. Polygiene® treatment prevents the proliferation of microorganisms such as bacteria and fungi that cause unpleasant odors.

FEATURES

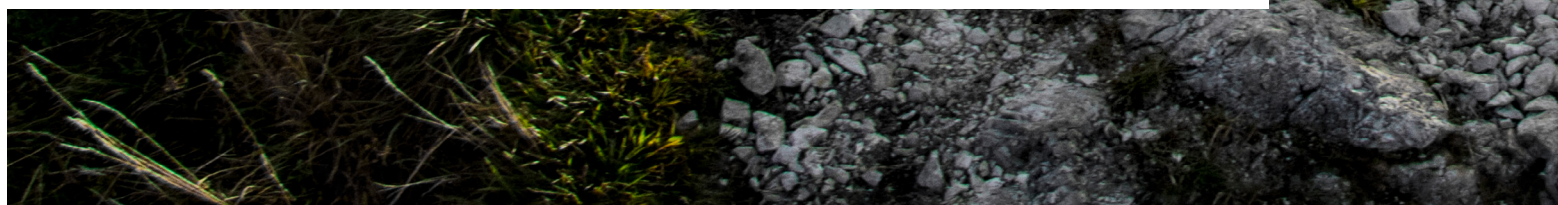
- Crew-neck T-shirt.
- Transparent printed writing on front.







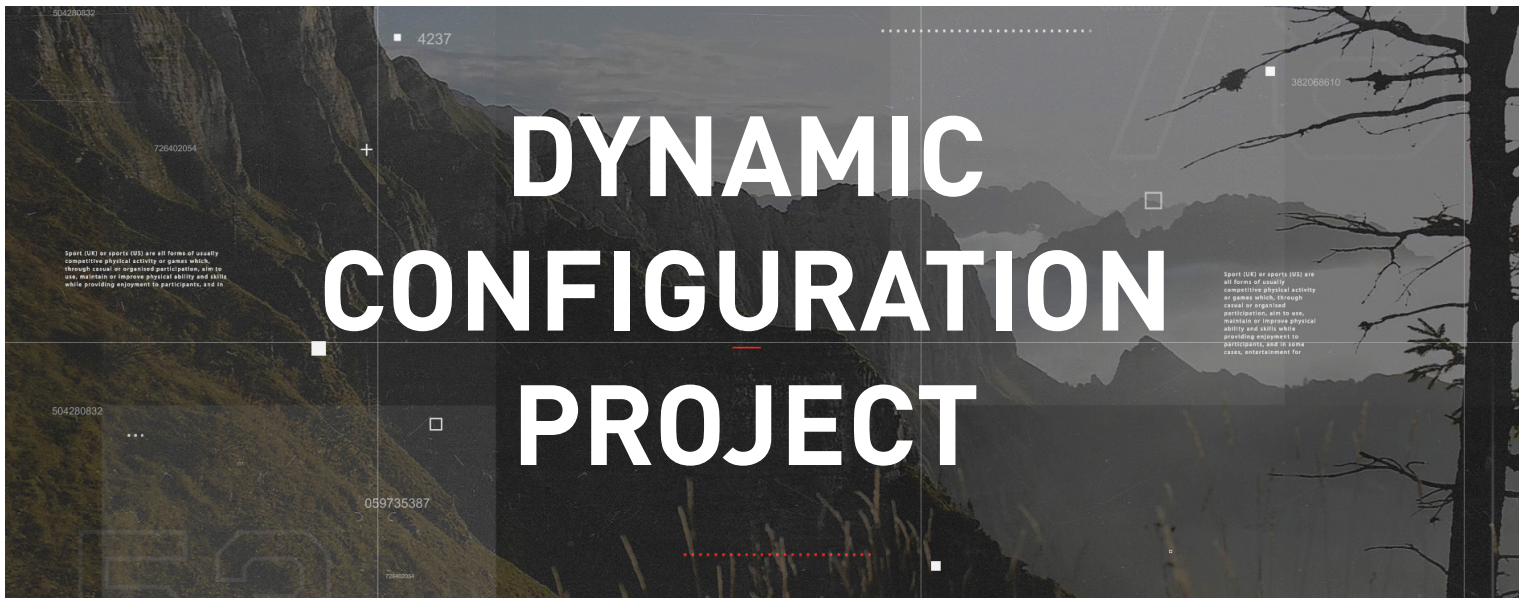
The less weight you carry, the less effort you expend. The less effort you expend, the faster you can go. We lessen both your physical and mental load so you can go light.





DYNAMIC





INTENSITY LEVEL

You'll choose the best combination of garments for the intensity of your activity. The less intense the effort, the warmer you need to dress. The more intense, the lighter you dress.

BODY SIZE AND SHAPE

Everyone has a different physical structure; people who wear the same size may not be the same height.



UNIQUE STYLE

Everyone can choose their own style and always feel at ease.

Karpos produces technical, lightweight and breathable garments for moving quickly in the mountains, because being light and fast allows you to stop — not because you have to but because you want to. Because you want to take time to enjoy what's around you, or because you want to move safely and have time to get back if the weather takes a turn for the worse.

If you combine all this with the ability to choose the perfect combination of clothes for your run then you've reached a new level of performance. Because performance is not only about the stopwatch but also about how you do things, and for us it's essential that you do them while having fun and in absolute safety.

Now, Karpos offers you the opportunity to experience a higher level of performance with our garments thanks to the new "combinations" program initiated by our research and development department. By combining a variety of our most technical running-related products, you can handle different weather conditions, enjoy a perfect fit and above all reflect your own personal style.

 /2500937

002
BLACK/GREEN FLUO

LAVAREDO SHORT

WEIGHT_ 40 gr
FIT_ SLIM
SIZE_ XS-3XL
W/P_ DWR
FABRICS
K-SENSE



FABRIC

- Short made with extremely lightweight, stretchy, quick-drying fabric with a DWR treatment.

FEATURES

- Stretch side panels for improved fit.
- Option to combine with Lavaredo Boxer, Lavaredo Short Tight or Lavaredo Tech Tight via straps with buttons.

273
GREEN FLASH



002
BLACK



/2500938 

LAVAREDO BOXER

WEIGHT_ 274 gr

FIT_ SLIM

SIZE_ XS - 3XL

W/P

FABRICS_

Sensitive
CLOTHING



INSULATION

1



WATER PROTECTION

0



WIND PROTECTION

0



BREATHABILITY

5



PACKABLE

5

FABRIC

- Made of 117 g Sensitive® Plus for maximum breathability, quick drying and excellent fit. The belt is made of highly compactible stretch fabric.

FEATURES

- Front fly.
- Small side pockets for gel.
- Built-in belt with 4 pockets.
- Strap for quick opening of pockets.
- Ultra-flat seams to reduce chafing.
- Bonded leg endings and waist to eliminate chafing.
- Buttonholes for connecting with Lavaredo Short.

002
BLACK



/2501097 

LAVAREDO EASY BOXER

WEIGHT_ 250 gr

FIT_ SLIM

SIZE_ XS - 3XL

W/P

FABRICS_

Sensitive
CLOTHING



INSULATION

1



WATER PROTECTION

0



WIND PROTECTION

0



BREATHABILITY

5



PACKABLE

5

FABRIC

- Made with Sensitive® Plus 117 g fabric to ensure maximum breathability, quick drying and excellent fit.

FEATURES

- Front fly.
- Ultra-flat seams to reduce chafing.
- Bonded leg ends and waist to eliminate any chafing.
- Buttonholes for connecting to Lavaredo Short.

 / 2500942

002
BLACK

LAVAREDO SHORT TIGHT

WEIGHT_ 150 gr
FIT_SLIM
SIZE_XS-3XL
W/P
FABRICS

Sensitive
SCULPT



FABRIC

- Made with 220 g Sensitive® Sculpt for a high level of muscle compression. The belt is made of highly compactible stretch fabric.

FEATURES

- Shaped leg ending, shorter in back for maximum comfort.
- Silicone on inside bottom of leg to prevent slipping.
- Raw-cut leg ending.
- Ultra-flat seams to reduce chafing.
- Ultra-flat waist in front for optimum comfort.
- Three open pockets for gel.
- Nonslip silicone print on thigh.
- Strap inside key pocket.
- Strap for quick opening of pockets.
- Buttonholes for connecting with Lavaredo Short.

 / 2500943

002
BLACK/GREEN FLUO

LAVAREDO TECH TIGHT

WEIGHT_ 185 gr
FIT_SLIM
SIZE_XS-3XL
W/P
FABRICS_

Sensitive
SCULPT



FABRIC

- Made with 220 g Sensitive® Sculpt for a high level of muscle compression. The lower part of the tight is made of Sensitive® Sculpt light, and the back of the knee is in mesh for greater breathability. The belt is made of highly compactible stretch fabric..

FEATURES

- Raw-cut leg ending.
- Ultra-flat seams to reduce chafing.
- Front waist with elastic for optimum comfort.
- Two open side pockets for gel.
- Zippered back pocket.
- Nonslip silicone print on thigh.
- Strap inside key pocket.
- Strap for quick opening of pockets.
- High-visibility reflectivity on side.
- Buttonholes for connecting with Lavaredo Short.

187
GREEN FLUO



/2500939

LAVAREDO TECH JERSEY

WEIGHT_ 80 gr
FIT_SLIM
SIZE_S-3XL
W/P
FABRICS
K-SENSE



440
INDIGO BUNTING



FABRIC

- Made entirely of highly breathable, ultralightweight quick-drying fabric. Very soft to the touch, for total comfort during physical activity..

FEATURES

- Half-zip on front.
- Construction with as few seams as possible to prevent chafing.
- Ultrasonic welded back seam to completely eliminate any chafing.
- Bonded sleeve ends and bottom of garment.

LAVAREDO JACKET

#WEIGHT_ 335 gr

#FIT_SLIM

#SIZE_S-3XL

#W/P_DWR

#FABRICS

Sensitive
PLUS

K-DRY

 POLARTEC®
Alpha



FABRIC

- Windproof fabric with DWR treatment, with controlled airflow to increase breathability on chest, upper sleeves and side panels. Sensitive® Plus 117 g. fabric at bottom in front, on central back panel and on hood to ensure maximum breathability and excellent fit. Polartec® Alpha 50 g/m2 insulation for warmth. Inner lining to wick away moisture and eliminate damp feeling against skin.

FEATURES

- YKK® front zip for faster opening.
- Wind flap with zip garage.
- Two front pockets with YKK® zippers.
- Lightweight hood in Sensitive® fabric.
- Draw cord at bottom.
- Trim at sleeve ends and bottom.
- Reflective inserts on back.

440
BLACK / INDICO BUNTING



328
DEEP TEAL BLACK



187
GREEN FLUO BLACK



002
BLACK



/2500876

LAVAREDO VEST

WEIGHT_ 90 gr

FIT_SLIM

SIZE_S-3XL

W/P_DWR

FABRICS_

Sensitive
PLUS

K-DRY



INSULATION
1



WATER PROTECTION
0



WIND PROTECTION
3



BREATHABILITY
4



PACKABLE
4

187

GREEN FLUO BLACK



FABRIC

- Windproof fabric with DWR treatment on front, with controlled airflow to increase breathability. Sensitive® Plus 117 g. fabric at bottom in front and on side panels for excellent fit. Perforated printed fabric on back for maximum breathability.

FEATURES

- YKK® front zip.
- Chest pocket.
- Shaped collar.
- Elastic trim on bottom and armholes.
- Internal stuff sack.
- Reflective inserts on back.

410

SKY CAPTAIN INSIGNIA BLUE



440

INDIGO BUNTING / BLACK



LAVAREDO JERSEY

WEIGHT_ 124gr

FIT_SLIM

SIZE_S-3XL

W/P

FABRICS

Sensitive

K-SENSE



FABRIC

- Made with Sensitive Plus 117 g. fabric on front and shoulders. Back and under sleeves made with breathable and quick-drying fabric.

FEATURES

- Ergonomic cut for maximum freedom of movement.
- Reflective inserts on back.
- No labels on inside back of neck to eliminate irritation.
- Raglan sleeves for improved movement while running.

410
SKY CAPTAIN/YELLOW FLUO



328
DEEP TEAL/ORANGE FLUO



440
INDIGO BUNTING/BLACK



087
GREEN FLUO



/2500684

SWIFT JERSEY

WEIGHT_ 95 gr
FIT_ SLIM
SIZE_ S-3XL
W/P
FABRICS_
K-SENSE



1



0



1



5



5

181
ORANGE FLUO/WHITE



440
INDIGO BUNTING



FABRIC

- Made of K-Sense fabric with rip-stop warp, with two-needle elastic stitching in two colours for enhanced freedom of movement.

FEATURES

- Collar finished with a hidden seam to avoid uncomfortable rubbing.
- Prints on the sleeves and back.

102
BLACK/GREEN FLUO



366
INSIGNIA BLUE



FAST TANK

WEIGHT_ 77 gr
FIT_SLIM
SIZE_S-3XL
W/P
FABRICS
K-SENSE



FABRIC

- Made of K-Sense fabric with rip-stop warp, with two-needle elastic stitching in two colours for enhanced freedom of movement.

FEATURES

- Collar finished with a hidden seam to avoid uncomfortable rubbing.
- Printed back and sleeves.

366

INSIGNIA BLUE/YELLOW FLUO



102

BLACK/GREEN FLUO



440

INDIGO BUNTING/BLACK



440
INDIGO BUNTING/BLACK



/2500172 

FAST EVO SHORT

WEIGHT_ 110gr
FIT_SLIM
SIZE_S-3XL
W/P_ DWR
FABRICS
K-STRETCH
KOOL MESH



002
BLACK



FABRIC

- Made with two types of outer fabric that are extremely lightweight, soft and quick drying. The front fabric has a DWR treatment that helps repel water and mud. The back fabric is perforated to significantly increase breathability.

FEATURES

- Elastic waist.
- Internal draw cord.
- 1 back pocket with zip.
- 2 open side pockets.
- Built-in brief.
- Reflective logo on side.

002
BLACK



/2500536 

FAST SHORT

WEIGHT_ 91gr
FIT_SLIM
SIZE_S-3XL
W/P_ DWR
FABRICS
K-STRETCH
KOOL MESH



FABRIC

- Made with K-Stretch with DWR finish to help repel water and dirt from the surface of the fabric. The stretch fabric is cool and lightweight. Highstretch crotch insert. Inner short in Kool Mesh designed for maximum freedom of movement and breathability.

FEATURES

- Elastic waistband.
- Three back pockets with trim.
- Side slits.
- Inner stretch mesh brief.
- Reflective detailing.

TRE CIME PANT

WEIGHT_ 260 gr
FIT_ SLIM
SIZE_ 44-60
W/P_ DWR
FABRICS
K-STRETCH

002
BLACK



FABRIC

- Pant made of two-way stretch nylon fabric for excellent abrasion resistance; lightweight and breathable for warmer conditions, with a DWR treatment for water repellency. The yoke at the waist and the back part of the leg are made of a very lightweight, soft and stretchy DWR-treated fabric for a perfect fit in any situation.

FEATURES

- Marled elastic at waist.
- Draw cord inside waistband.
- Yoke at waist in lightweight fabric to improve fit.
- Zippered front fly with flap.
- Two front zippered pockets.
- One back zippered pocket.

102
BLACK/GREEN FLUO



202
BLACK/INDIGO BUNTING



002
BLACK



/2500948

TRE CIME BERMUDA

WEIGHT_ 177 gr
FIT_ SLIM
SIZE_ 44-60
W/P_ DWR
FABRICS_
K-STRETCH



102
BLACK/GREEN FLUO



FABRIC

- Short made with a very lightweight, soft and stretchy DWR-treated fabric for excellent fit and breathability in any situation.

FEATURES

- Marled elastic at waist.
- Draw cord inside waistband.
- Yoke at waist in lightweight fabric to improve fit.
- Zippered front fly with flap.
- Two front zippered pockets.
- One back zippered pocket.

366
INSIGNIA BLUE



202
BLACK/INDIGO BUNTING



N /2501074

002
BLACK/DARK GREY

LOT EVO JACKET

#WEIGHT_ 199 gr
#FIT_SLIM
#SIZE_S-3XL
#W/P_ DWR
#FABRICS
K-DRY



FABRIC

- Windproof fabric with DWR treatment, with controlled airflow to increase breathability, on the front, back, hood and sleeves. Side panels and bottom panel in Sensitive® Plus 117 g fabric for a perfect fit.

FEATURES

- Simple hood with elastic trim.
- Minimalist front zip.
- Small zippered chest pocket.
- Adjustable draw cord at waist.
- Reflective detailing on left arm.
- Internal stuff sack.

440
INDIGO BUNTING / BLACK





LOT RAIN JACKET

#WEIGHT_ 184gr
#FIT_REGULAR
#SIZE_XXS-3XL
#W/P_STRATEGIC
20000 DWR
#FABRICS
K-DRY



FABRIC

- Extremely lightweight 2.5-layer 100% nylon fabric, 50g per square meter, with a 20,000mm water column and 20,000g/m²/24h breathability. The DWR treatment helps repel water and dirt from the surface of the jacket. Made with waterproof YKK® zippers. The tape used for sealing the seams is 15mm for improved breathability and lighter weight.

FEATURES

- Hood with rigid visor and wind seal around face, adjustable with a draw cord in back.
- Waterproof YKK® zipper in front with 3mm chain for lighter weight.
- Waterproof zipper flap with zip garage.
- Chest pocket with waterproof YKK® zipper that can be used as a stuff sack for the jacket.
- Chest strap with button to limit opening when the zipper is open.
- Adjustable draw cord at bottom.
- Adjustable velcro sleeve cuffs.
- Karpis wordmark on back of left shoulder and logo on right sleeve.

168
DARK GREY/BLACK



314
APPLE GREEN/BLACK/BLUETTE



440
BLACK/INDIGO BUNTING



LOT RAIN PANT

WEIGHT_ 209 gr
FIT_ REGULAR
SIZE_ XXS - 3XL
WP_ 2000 DWR
FABRICS_
K-DRY



FABRIC

- Stretchy K-Dry fabric with a membrane, with a 20,000mm water column and 20,000g/m²/24h breathability. The DWR treatment helps repel water and dirt from the surface of the fabric. The seam-sealing tape inside is 15mm for improved breathability and lighter weight. Uses YKK® zippers.

FEATURES

- Waterproof YKK® side zippers to knee.
- Elastic waistband with draw cord on inside.
- Stretch panel on upper back for greater breathability and improved fit.
- Inside pocket at back to be used as a stuff sack.
- Elastic at bottom of legs.



You can stop because you have to, or you can stop because you want to. Our job is to make it a choice that's dictated by your preferences and not by the limits of your equipment.





SEVERE

TEMPORALE JACKET

WEIGHT_ 380 gr
FIT_REGULAR
SIZE_S-3XL
20000 DWR
FABRICS
K-DRY



FABRIC

- Made with two types of 2.5-layer fabric to offer maximum freedom of movement and stretch where needed. The most exposed parts of the jacket are made with a more durable fabric on the inside to provide greater protection. The fabrics have a 20,000 mm water column and 10,000 g/m²/24h breathability. DWR treatment on the surface to repel water and dirt..

FEATURES

- Shaped hood with rigid visor and adjustable draw cord. All zips are YKK®
- 2 closed waterproof pockets on front.
- Vents on back for increased breathability.
- Inside mesh pocket.
- Adjustable draw cord at bottom of garment.



002
BLACK/DARK GREY



VETTA EVO JACKET

WEIGHT_ 280 gr
FIT_REGULAR
SIZE_S-3XL
20000 DWR
FABRICS
K-DRY



FABRIC

- The K-Dry membrane guarantees a 20,000 mm water column with breathability measured at 18,000 g/m²/24 hours. The DWR finish helps repel water and dirt from the fabric surface. The internal 15 mm tape promotes better transpiration and better outward look. All the zippers on this garment are YKK®. It has a technical fit characterised by spare lines, carefully designed to reduce cuts on the garment to a minimum and reduce the taping, the stretch inserts on shoulders and hem increase the freedom of movement.

FEATURES

- The hood is to be worn over the helmet and is adjusted by means of a drawstring at the back.
- The visor is stiff.
- The front zippers are waterproof for increased protection.
- Waterproof flap under the zipper, with fabric chin protection.
- Pockets closed by a waterproof zipper.
- Adjustable drawstring at the hem.
- Sleeve edge adjustment toggle.
- Protected air vent at the back.
- Stuff sack.

002
BLACK/DARK GREY



168
DARK GREY/BLACK

/2500837 

LASTEI EVO LIGHT JACKET

WEIGHT_ 360 gr
FIT_REGULAR
SIZE_S - 3XL
DWR
FABRICS_
K-SHELL

 PERTEX®



314
APPLE GREEN / BLACK



FABRIC

- Jacket made with 20-denier Pertex® Quantum fabric with DWR finish to help repel water and dirt from the surface of the garment. Windproof fabric on the front, on the upper sleeves and on the back toward the sides. Highly abrasion-resistant, breathable and stretchy DWR-treated nylon at the bottom, on the lower sleeves, in the central part of the back and on the hood, to increase breathability and improve fit. Synthetic 40 g. insulation.

FEATURES

- Full-length YKK® zip.
- Two front zippered pockets.
- Wind flap behind zipper with zip garage.
- Draw cord at bottom.
- Hood with elastic trim.

366
INSIGNIA BLUE



DEFENCE EVO JACKET

WEIGHT_ 432 gr
FIT_SLIM
SIZE_S-3XL
DWR
FABRICS
K-STRETCH



FABRIC

- Elastic and breathable K-Shell jacket reinforced with Cordura® at the elbows, with detachable sleeves. It offers good temperature regulation also in very cold weather. The bi-stretch fabric inserts under the sleeves and back enhance the wearer's freedom of movement. No-slip silicone print on the shoulders. All the zippers on this garment are YKK®.

FEATURES

- Zipper on the front for quicker opening.
- Windproof front flap
- Chest pocket closed with a small zipper.
- Two front pockets closed with small zippers adjustable drawstring at the bottom.
- Zipper in a different colour to make reassembling the garment easier.



 /2500839

140
FLAME/BLACK

PARETE JACKET

#WEIGHT_ 435 gr
#FIT_REGULAR
#SIZE_S - 3XL
#DWR
#FABRICS_
K-SHELL



FABRIC

- Jacket made with wind-resistant, water-repellent and slightly stretchy K-Shell. Embossed outer surface with high abrasion resistance.

FEATURES

- YKK® Vislon® zipper in front for quick opening.
- Wind flap with zip garage.
- Two front zippered pockets.
- Zippered chest pocket.
- Shaped hood.
- Stretch cuffs on sleeves.
- Draw cord at bottom of garment.

199
BLUETTE/BLACK



168
DARK GREY/BLACK



314
APPLE GREEN/BLACK



002
BLACK



/2500759

PARETE VEST

WEIGHT_ 240 gr
FIT_REGULAR
SIZE_S-3XL
DWR
FABRICS
K-SHELL



168
DARK GREY/BLACK



FABRIC

- Vest in wind-resistant, water-repellent and slightly stretchy K-Shell. Embossed outer surface with high abrasion resistance.

FEATURES

- Shaped collar for increased comfort.
- YKK® Vislon® zipper for rapid opening.
- Wind flap.
- Two front zippered pockets.
- Draw cord and elastic trim at bottom of garment.
- Four-needle stitching for increased comfort.
- Karpos wordmark printed on back.

314
APPLE GREEN/BLACK



299
BLUETTE/BLACK



PIZZOCCO FLEECE

#WEIGHT_ 409 gr
#FIT_REGULAR
#SIZE_S -3XL

#FABRICS_
THERMO FLEECE



FABRIC

- Fleece made with Thermo Fleece fabric, which has a checked structure on the inside that increases insulation and makes the garment lighter weight. Open-weave fabric on the sides, underside of sleeves and center back to increase breathability.

FEATURES

- Full-zip fleece with YKK® zipper.
- Two front zippered pockets.
- Zippered chest pocket.
- Zip garage.
- Elastic trim at bottom of garment and ends of sleeves.

168
DARK GREY/BLACK



214
APPLE GREEN



299
BLUETTE/DARK GREY



410
SKY CAPITAN



168
DARK GREY

/2500881 

BREEZY FLEECE

WEIGHT_ 425 gr
FIT_REGULAR
SIZE_S - 3XL

FABRICS_
THERMO FLEECE



366
INSIGNIA BLUE



FABRIC

- Made with lightweight Thermo Fleece with a marled finish. Ideal for moderate temperatures. Highly abrasion resistant.

FEATURES

- Full-length YKK® zipper.
- Two front zippered pockets.
- Elastic trim on sleeves.
- Four-needle stitching.

 /2500951

002
BLACK/DARK GREY

NUVOLAU FLEECE

#WEIGHT_ 370 gr
#FIT_REGULAR
#SIZE_S-3XL

#FABRICS
THERMO FLEECE



FABRIC

- Fleece made with medium-weight Thermo Fleece, perfect for any summer outdoor activities.

FEATURES

- Full-length YKK® zip.
- Shaped hood.
- Two front zippered pockets.
- Zippered chest pocket.
- Zip garage.
- Stretch trim at bottom of fleece and on ends of sleeves.

410
SKY CAPTAIN/INSIGNIA BLUE



455
MAROCCAN BLUE/DARK GREY



088
ASPHALT/DARK GREY

/2500953 

CRODA DA LAGO FLEECE

WEIGHT_ 428 gr
FIT_REGULAR
SIZE_S-3XL

FABRICS
THERMO FLEECE



366
INSIGNIA BLUE / BLUE



FABRIC

- Made with lightweight Thermo Fleece, very cool and soft, ideal for any outdoor summer activities.

FEATURES

- No front zip.
- Draw cord around hood.
- Kangaroo pocket.

314
APPLE GREEN/ASPHALT



POMEDES T-SHIRT LS

#WEIGHT_ 270 gr
#FIT_REGULAR
#SIZE_S-3XL
#
#FABRICS
THERMO FLEECE



FABRIC

- Very soft and comfortable fabric. Perfect for any outdoor excursion. The comb stitching gives the garment a fresh and innovative look.

FEATURES

- Full-length front zip.
- Small zippered chest pocket.
- Comb stitching to reduce chafing.



168
DARK GREY

/2501098 

LOMA JERSEY LS

WEIGHT_ 115 gr
FIT_REGULAR
SIZE_S-3XL

FABRICS
THERMO FLEECE



314
APPLE GREEN



FABRIC

- Made with cool, soft K-Sense and stitched with stretch seams for greater freedom of movement.

FEATURES

- Invisible stitching at neck to prevent irritation.
- Printed on chest.

410
SKY CAPTAIN



MOVED EVO JERSEY

#WEIGHT_ 104 gr

#FIT_REGULAR

#SIZE_S-3XL

#

#FABRICS

 POLARTEC®
Delta



Polygiene®
SHIELD SYSTEM



1



0



0



5



5



FABRIC

- Made with Polartec® Delta with a two-color mesh design, this fabric helps maintain a constant body temperature even during intense heat. The sleeves are made with a highly breathable ultralightweight fabric that dries quickly. Very soft to the touch for total comfort during physical activity. Polygiene® treatment prevents the growth of microorganisms such as bacteria and fungi that cause unpleasant odors.

FEATURES

- Print on body of jersey.
- Trim on neckline.
- Polygiene® treatment.

091

YELLOW FLUO/BLUETTE



087

BLACK / GREEN FLUO



181

ORANGE FLUO/BLACK



002
BLACK



/2500957 

CRODA ROSSA JERSEY

WEIGHT_ 120 gr
FIT_REGULAR
SIZE_S - 3XL

FABRICS_
K-sense



INSULATION
1



WATER PROTECTION
0



WIND PROTECTION
0



BREATHABILITY
5



PACKABLE
5

187

BLACK / GREEN FLUO



328

DEEP TEAL/GREEN FLUO



FABRIC

- Made with printed fabric on the body of the jersey and a lighter-weight and more breathable fabric on the sleeves for improved fit and greater breathability.

FEATURES

- Double-needle stitching to reduce chafing.
- Elastic trim on collar.

455

MOROCCAN BLUE / ORANGE FLUO



366

INSIGNIA BLUE/DRESDEN BLUE



SASSONGHER JERSEY

WEIGHT_ 103 gr

FIT_REGULAR

SIZE_S-3XL

#

FABRICS

K-SENSE



Polygiene®
STAYS FRESH



INSULATION

1



WATER PROTECTION

0



WIND PROTECTION

1



BREATHABILITY

5



PACKABLE

5



FABRIC

- Made with two types of fabric: soft, stretchy and breathable on the main body of the jersey, and lighter-weight and more breathable polypropylene in the areas of greatest perspiration. Polygiene® treatment prevents the growth of microorganisms such as bacteria and fungi that cause unpleasant odors.

FEATURES

- Collar finished with invisible stitching to prevent irritation.
- Polygiene® treatment.

410

SKY CAPTAIN / INSIGNIA BLUE



187

GREEN FLUO/DARK GREY



434

CORSAIR/ORANGE FLUO



002
BLACK/DARK GREY



/2500955

RAVALLES JERSEY

WEIGHT_ 122 gr
FIT_REGULAR
SIZE_S - 3XL

FABRICS_
K-SENSE



INSULATION
1



WATER PROTECTION
0



WIND PROTECTION
0



BREATHABILITY
5



PACKABLE
5

314
APPLE GREEN/BLACK



320
QUETZAL GREEN/GREEN FLUO



FABRIC

- Made with a stretchy, breathable fabric for any summer conditions. Polygiene® treatment prevents the growth of microorganisms such as bacteria and fungi that cause unpleasant odors.

FEATURES

- Double-needle stitching to reduce chafing.
- Elastic trim on collar.
- Polygiene® treatment.

517
LEAD GREY/GREEN FLUO

819
TANGERINE TANGO/DARK GREY



ALTA VIA JERSEY

WEIGHT_ 123 gr

FIT_REGULAR

SIZE_S-3XL

##

FABRICS

K-SENSE



Polygiene®
STAYS FRESH



1



0



1



5



5



FABRIC

- Made with a stretchy, breathable fabric and Polygiene® treatment to prevent the growth of microorganisms such as bacteria and fungi that cause unpleasant odors.

FEATURES

- Collar finished with invisible seams to prevent irritation.
- Polygiene® treatment.

320
QUETZAL GREEN



410
SKY CAPTAIN



299
BLUETTE



455
MOROCCAN BLUE



517
LEAD GREY



168
DARK GREY

/2501078 

LOMA PRINT JERSEY

WEIGHT_ 94 gr
FIT_REGULAR
SIZE_S - 3XL

FABRICS_
K-SENSE



366
INSIGNIA BLUE



FABRIC

- Made with K-Sense and stitched with stretch seams for greater freedom of movement.

FEATURES

- Invisible stitching at neck to prevent irritation.
- Graphic print on chest.

168
DARK GREY



314
APPLE GREEN



366
INSIGNIA BLUE
314
APPLE GREEN



 /2500531

002
BLACK



LOMA JERSEY

WEIGHT_ 93 gr
FIT_REGULAR
SIZE_S-3XL

FABRICS
K-SENSE



FABRIC

- Made with K-Sense, the jersey is sewn with stretch stitching for greater freedom of movement.

FEATURES

- Collar with hidden seams to eliminate irritation.
- Print on chest.

276
SULPHUR SPRING



299
BLUETTE



314
APPLE GREEN



366
INSIGNIA BLUE



819
TANGERINE TANGO



168
DARK GREY



455
MOROCCAN BLUE



LOMA TANK

WEIGHT_ 73 gr
FIT_REGULAR
SIZE_XXS-3XL

FABRICS
K-SENSE



168
DARK GREY



FABRIC

- Made with K-Sense and stitched with stretch seams for greater freedom of movement.

FEATURES

- Invisible stitching at neck to prevent irritation.
- Printed on chest.

410
SKY CAPTAIN



314
APPLE GREEN



440
INDIGO BUNTING





WALL PANT

WEIGHT_ 369 gr
FIT_SLIM
SIZE_ 44-60
DWR
FABRICS
K-STRECTH
KORTEC
DYNEEMA®



FABRIC

- Made with K-Stretch fabric with DWR treatment to help repel water and dirt from the surface of the fabric. Kortec reinforcements on knee and at bottom for greater wear resistance. The crotch design allows for great freedom of movement. All the zippers are YKK®.

FEATURES

- Elastic waistband with logo elastic on the inside, adjustable with a stretch draw cord.
- Pockets with Vislon® zip and garage ensure fast opening.
- Invisible zip to open front flap.
- Vislon® zip at bottom with internal gusset.
- Elastic gripper at bottom of pant.
- Reflective detailing.



002
BLACK/DARK GREY



/2500662

WALL EVO PANT

WEIGHT_ 420 gr
FIT_SLIM
SIZE_44-60
DWR
FABRICS
K-STRETCH



168
DARK GREY/BLACK



FABRIC

- Made of K-Stretch fabric with a DWR-finish that helps repel water and dirt from the fabric surface. With Cordura® reinforcements on the knees for increased durability. The design of the crotch cut makes for full freedom of movement. All the zippers on this garment are YKK®.

FEATURES

- Waistband with fly and internal logo elastic, adjusted by means of a drawstring.
- Front pockets with zipper.
- One back pocket closed by a minimalist zipper.
- Reflective inserts.
- Zipper at the ankle, with internal insert.
- Reflective detailing

WALL EVO G. PANT

WEIGHT_ 420 gr
FIT_SLIM
SIZE_44-60
DWR
FABRICS
K-STRETCH



FABRIC

- Made with K-Stretch with DWR treatment, which helps repel water and dirt from the surface of the fabric. Cordura® reinforcements on the knees for increased durability. The design of the crotch allows for great freedom of movement.

FEATURES

- Waistband with fly, with logo elastic inside, adjusted with elastic draw cord.
- Front pockets with YKK® Vislon® zippers.
- Back pocket with minimalist zipper.
- Gaiter at bottom.
- Zip at bottom of leg with internal gusset.
- Reflective detailing.



002
BLACK/GREEN FLUO



/2500849

RAMEZZA LIGHT PANT

WEIGHT_ 335 gr
FIT_SLIM
SIZE_ 44-60
DWR
FABRICS
K-STRETCH



102
BLACK/LEAD GREY



FABRIC

- Made with the innovative mid-weight K-Stretch Plus fabric with two-way stretch and DWR treatment that helps repel water and dirt from the surface. Cordura® fibers with Free Shape technology are used in areas most subject to abrasion.

FEATURES

- Button fly with hook inside.
- Two front zippered pockets.
- One back pocket with zip.
- Cordura® in areas most subject to abrasion.

366
INSIGNIA BLUE



ROCK PANT

WEIGHT_ 325 gr
FIT_REGULAR
SIZE_ 44-60
DWR
FABRICS
K-STRECTH
KORTEC



FABRIC

- Made with K-Stretch fabric with DWR treatment to help repel water and dirt from the surface of the fabric. Kortec reinforcements at the bottom for greater wear resistance. Upper front and lower back in one-way stretch fabric. Two-way stretch fabric on knee and back. The crotch design allows for great freedom of movement. All the zippers are YKK®.

FEATURES

- Elastic waistband with logo elastic on the inside, adjustable with a stretch draw cord on the outside.
- Pockets with Vislon® zip with garage for faster opening.
- Invisible zip to open front flap.
- Elastic gripper at bottom of pant.
- Reflective detailing.

168
DARK GREY/BLACK/WHITE



268
DARK GREY/BLACK/APPLE GREEN



299
BLUETTE/LEAD GREY



302
DARK GREY/BLACK/APPLE GREEN/INDIGO



314
APPLE GREEN/DARK GREY



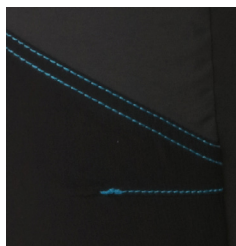
410
SKY CAPTAIN



102
BLACK/BLACK



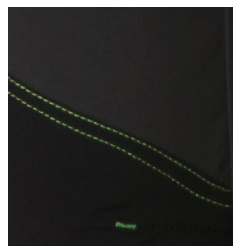
002
BLACK/DARK GREY/BLUETTE



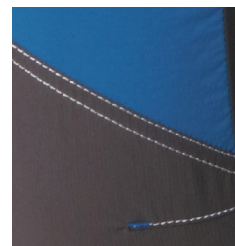
168
DARK GREY/BLACK/WHITE



268
DARK GREY/BLACK/APPLE GREEN



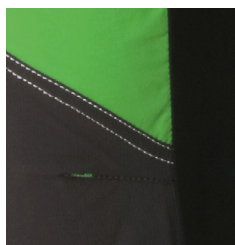
299
BLUETTE/LEAD GREY



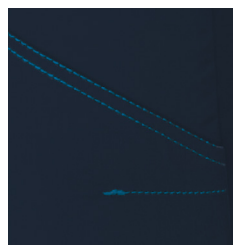
302
DARK GREY/BLACK/APPLE GREEN/INDIGO



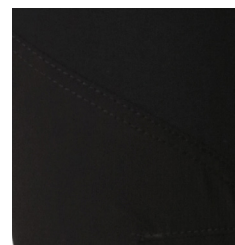
314
APPLE GREEN/DARK GREY



410
SKY CAPTAIN



102
BLACK/BLACK



FUTURA PANT

WEIGHT_ 320 gr
FIT_REGULAR
SIZE_44-60
DWR
FABRICS
K-STRECH



328
DEEP TEAL/DARK GREY



FABRIC

- Made with cool, soft K-Stretch fabric with two-way stretch. Highly resistant to wear and tear, thanks to its nylon composition.

FEATURES

- Button fly with hook inside.
- Adjustable draw cord inside.
- Two open front pockets.
- One open back pocket.
- One zippered back pocket.
- Draw cord at bottom of leg.
- Elastic inserts at waist.

888
INSIGNIA BLUE



999
BLACK/DARK GREY



168
DARK GREY/BLACK



/2500964

DOLADA PANT

WEIGHT_ 330 gr
FIT_REGULAR
SIZE_44-60
DWR
FABRICS
K-STRETCH



455
MOROCCAN BLUE



FABRIC

- Made with abrasion-resistant ripstop nylon with a water-repellent treatment. Two-way stretch fabric provides excellent fit and softness against the skin.

FEATURES

- Button and Velcro fly closure.
- Two open front pockets.
- Draw cord inside waistband.
- Two zippered pockets on thighs.
- Two open back pockets.
- Stretch yoke at waist for improved fit.

510
SKY CAPTAIN



002
BLACK

FANTASIA EVO PANT

WEIGHT_ 278 gr
FIT_REGULAR
SIZE_42-60
DWR
FABRICS
K-STRECH



FABRIC

- Made of DWR-finished K-Stretch fabric, it helps repel water and dirt from the fabric surface. Single fabric garment. The design of the crotch insert allows for full freedom of movement. All the zippers on this garment are YKK®.

FEATURES

- Front zipper fly, logo elastic at the waist.
- Minimalist zipper with garage on the pockets, for decreased weight.
- Belt loops.
- Back zippered pocket.
- Reflective inserts.

268
DARK GREY/BLACK/APPLE GREEN



168
DARK GREY/BLACK



410
SKY CAPTAIN



002
BLACK



/2500832

EASYGOING PANT

WEIGHT_ 321 gr

FIT_REGULAR

SIZE_XS-3XL

W/P

FABRICS

Sensitive
POWER 230 g.



INSULATION

2



WATER PROTECTION

0



WIND PROTECTION

1



BREATHABILITY

4



PACKABLE

3

410
SKY CAPTAIN



FABRIC

- Made with Sensitive Power 230 g. fabric, which offers maximum freedom of movement and allows garments to hold their shape well. The honeycomb fabric texture promotes air circulation and quick drying. High UV protection.

FEATURES

- Draw cord at waist.
- Two open pockets.
- Back pocket with zip.
- Cuff at bottom of leg.

SANTA CROCE ZIP-OFF PANT

#WEIGHT_ 374 gr
#FIT_REGULAR
#SIZE_42-60
#DWR
#FABRICS
K-STRECH



FABRIC

- Made with two types of two-way stretch fabric for freedom of movement and elasticity, with DWR treatment.

FEATURES

- 2 zippered front pockets.
- Button fly.
- Belt loops.
- Back zippered pocket.
- Zip at knee to convert pant to short.
- Side zip from knee to ankle, to allow conversion to short without removing shoes.



168
DARK GREY/BLACK





ROCK BERMUDA

#WEIGHT_ 198 gr
#FIT_SLIM
#SIZE_44-60
#DWR
#FABRICS
K-STRECH



FABRIC

- Made with K-Stretch fabric with DWR treatment to help repel water and dirt from the surface of the fabric. Upper front in one-way stretch fabric. Twoway stretch fabric on back. The crotch design allows for great freedom of movement. All the zippers are YKK®.

FEATURES

- Elastic waistband with logo elastic on the inside, adjustable with a stretch draw cord on the outside.
- Pockets with Vislon® zip with garage for faster opening.
- Invisible zip to open front flap.
- Back pocket with invisible zip.
- Reflective detailing.

268

DARK GREY/BLACK/APPLE GREEN/INDIGO B.



299

BLUETTE/DARK GREY



314

APPLE GREEN/DARK GREY



410
SKY CAPTAIN



855
SCARLET IBIS



168
DARK GREY/BLACK



DOLADA BERMUDA

WEIGHT_ 206 gr
FIT_REGULAR
SIZE_ 44-60
DWR
FABRICS
K-STRECTH



168
DARK GREY/BLACK



FABRIC

- Made with abrasion-resistant ripstop nylon with a water-repellent treatment. Two-way stretch fabric provides excellent fit and softness against the skin.

FEATURES

- Button and Velcro fly closure.
- Draw cord inside waistband.
- Stretch yoke at waist for improved fit.
- Two open front pockets.
- One open back pocket.
- One zippered back pocket.

268
DARK GREY/APPLE GREEN



455
MOROCCAN BLUE/BLACK



510
SKY CAPTAIN



002
BLACK



/2500989 

FANTASIA BERMUDA

#WEIGHT_ 198 gr
#FIT_SLIM
#SIZE_44-60
#DWR
#FABRICS
K-STRETCH



168
DARK GREY



FABRIC

- Made with K-Stretch fabrics with DWR treatment to repel water and dirt from the surface.

FEATURES

- Zippered fly with snap closure.
- Belt loops.
- Two open front pockets.
- Two zippered side pockets.
- Back open pocket.
- Reflectivity on back.

410
SKY CAPTAIN





Karpos is color. Our use of color is unorthodox, as is our way of thinking.





FREE SPIRIT W

GENZIANELLA W T-SHIRT

WEIGHT_ 124 gr
FIT_REGULAR
SIZE_XS-XXL

FABRICS
K-SENSE



FABRIC
• 95% cotton / 5% elastane T-shirt.

001
DARK GREY MELANGE PRINT 1
409
RASPBERRY PRINT 1



289
AGAVE GREEN PRINT 2
101
WHITE PRINT 2



289
AGAVE GREEN PRINT 2



101
WHITE PRINT 2



409
RASPBERRY PRINT 1



366
INSIGNIA BLUE PRINT 3

/2501093 

BOTTOM D'OROW T-SHIRT



WEIGHT_ 116 gr
FIT_REGULAR
SIZE_XS - XXL

FABRICS_
K-SENSE



INSULATION
1



WATER PROTECTION
0



WIND PROTECTION
0



BREATHABILITY
4



PACKABLE
3

409
RASPBERRY PRINT 2



FABRIC

• 95% cotton / 5% elastane T-shirt.

366
INSIGNIA BLUE PRINT 3



409
RASPBERRY PRINT 2



476
BLUEBIRD PRINT 1



476
BLUEBIRD PRINT 1



ASTRO ALPINO W
T-SHIRT

WEIGHT_ 122 gr
FIT_REGULAR
SIZE_XS-XXL

FABRICS
K-SENSE



FABRIC
• 95% cotton / 5% elastane T-shirt.

391
FIG



476
BLUEBIRD





SALICE W PANT

WEIGHT_ 305 gr
FIT_REGULAR
SIZE_38-52
DWR
FABRICS
K-STRECTH



FABRIC

- Garment-dyed cotton pant.

FEATURES

- Elastic waist with button fly.
- Open front pockets with coin pocket.
- Open back pockets.
- Printed inserts.
- Draw cord at bottom of leg.

369
GUACAMOLE



619
BURNT HENNA



001
BLUE JEANS

/2501106 

SALICE JEANS W PANT

WEIGHT_ 419 gr
FIT_ REGULAR
SIZE_ 38 - 52
W/P
FABRICS



FABRIC

- Stretch denim pant.

FEATURES

- Elastic waist with button fly.
- Open front pockets with coin pocket.
- Open back pockets.
- Printed inserts.
- Draw cord at bottom of leg.



NOGHERA W PANT

WEIGHT_ 320 gr
FIT_REGULAR
SIZE_38-52

FABRICS
COTTON



FABRIC

- Garment-dyed cotton pant.

FEATURES

- Elastic waist with button fly.
- Open front pockets with small coin pocket.
- Open back pockets.
- Printed panels.
- Draw cord at bottom.

378
HYDRO



369
GUACAMOLE



542
RASPBERRY RADIANCE



092
HARBOR MIST



/2500975

NOGHERA W BERMUDA

#WEIGHT_ 209 gr
#FIT_REGULAR
#SIZE_38-52
#DWR
#FABRICS
COTTON



369
GUACAMOLE



FABRIC

- Garment-dyed cotton Bermuda short.

FEATURES

- Elastic waist with button fly.
- Open front pockets with small coin pocket.
- Open back pockets.
- Printed panels.

542
RASPBERRY RADIANCE

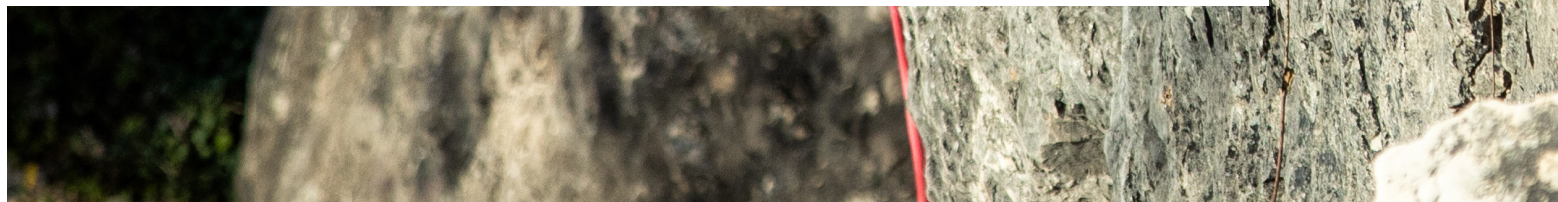


378
HYDRO





If you stay where you've always been, you'll see what you've always seen. If you go where you've never been before, maybe you'll be able to discover something new.





HIGHEST W

K-PERFORMANCE SPORT CLIMBING W PANT

WEIGHT_ 222 gr

FIT_REGULAR

SIZE_38 -52

W/P_ DWR

FABRICS_

K-STRETCH

CORDURA



INSULATION
2



WATER PROTECTION
2



WIND PROTECTION
2



BREATHABILITY
4



PACKABLE
3



FABRIC

- Made with a single two-way stretch fabric that ensures excellent freedom of movement and maximum breathability on every climb. The fabric is also extremely abrasion resistant, thanks to a high percentage of Cordura®, and offers maximum UV protection and a DWR treatment. The yoke is made of a lightweight ripstop fabric with two-way stretch for even greater breathability and freedom of movement.

FEATURES

- Stretchy rib-knit waist for excellent fit.
- Waist designed to be as flat as possible, for use with harness.
- Adjustable draw cord inside waistband.
- Fly with button and Velcro closure.
- Two open pockets in front.
- Draw cord at bottom.
- Brush loop on side.

092
HARBOR MIST



366
INSIGNIA BLUE



002
BLACK



/2500985 

K-PERFORMANCE ROCK CLIMBING W PANT

WEIGHT_ 274 gr

FIT_SLIM

SIZE_38-52

W/P_ DWR

FABRICS

K-STRETCH

CORDURA



INSULATION

2



WATER PROTECTION

2



WIND PROTECTION

2



BREATHABILITY

4



PACKABLE

3

092
HARBOR MIST



FABRIC

- Made with two-way stretch fabrics with a high percentage of Cordura® to ensure high resistance against rubbing and abrasion, and with high UV protection and a DWR treatment. The front and upper part of the back feature a heavier fabric, while the rest is made with a lighter, more breathable fabric.

FEATURES

- Stretchy rib-knit waist for excellent fit.
- Waist designed to be as flat as possible, for use with harness.
- Adjustable draw cord inside waistband.
- Fly with button and Velcro closure.
- Zippered front pockets, bonded to reduce thickness for greater comfort when using harness.
- Zip at bottom with gusset for adjustment.

366
INSIGNIA BLUE



K-PERFORMANCE HYBRID W JACKET

WEIGHT_ 285 gr
FIT_REGULAR
SIZE_XS-2XL
W/P_ DWR
FABRICS
K-DRY
CORPORA



FABRIC

- Jacket made of lightweight windproof nylon fabric with DWR treatment outside. A stretchy, breathable fabric is used on the underside of the sleeves to ensure maximum freedom of movement. The inner part is made with an extremely light fleece with Octa technology, which, thanks to the particular shape of the fibers, ensures greater warmth, lightness, breathability and compactability compared to other fleeces of equal weight.

FEATURES

- Full zip on front with wind flap and garage.
- Two zippered chest pockets with small cellphone pocket inside.
- Hood with draw-cord adjustment on back.
- Elastic at bottom.
- Lightweight and stretchy cuffs on sleeves.

410
SKY CAPTAIN/ INSIGNIA BLUE



168
DARK GREY

/2501068 

K-PERFORMANCE W T-SHIRT



WEIGHT_ 80 gr
FIT_REGULAR
SIZE_XS - XXL

FABRICS_
K-SENSE



INSULATION
1



WATER PROTECTION
0



WIND PROTECTION
0



BREATHABILITY
5



PACKABLE
5

410
SKY CAPTAIN



FABRIC

- Made with extremely lightweight, durable, stretchy and comfortable fabric, offering high UV protection and a natural look. Polygiene® treatment prevents the proliferation of microorganisms such as bacteria and fungi that cause unpleasant odors.

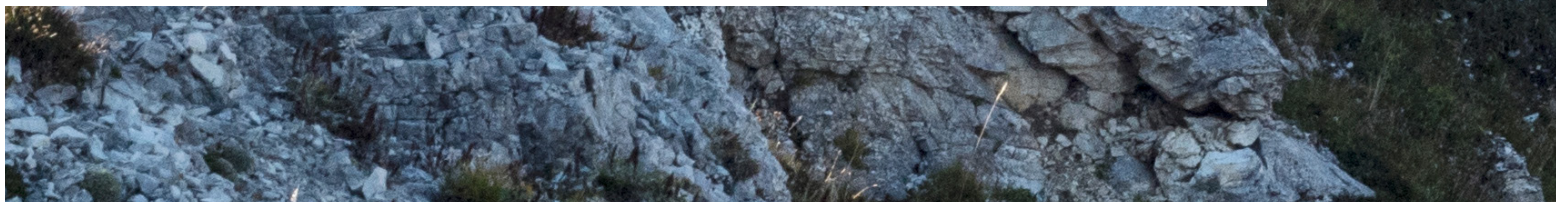
FEATURES

- Feminine neckline.
- Transparent printed writing on back.





The less weight you carry, the less effort you expend. The less effort you expend, the faster you can go. We lessen both your physical and mental load so you can go light.





DYNAMIC W

LAVAREDO W JACKET

WEIGHT_ 279 gr

FIT_SLIM

SIZE_XS-2XL

DWR

FABRICS

Sensitive
Plus

 POLARTEC®
Alpha

K-DRY



FABRIC


- Windproof fabric with DWR treatment, with controlled airflow to increase breathability on chest, upper sleeves and side panels. Sensitive® Plus 117 g. fabric at bottom in front, on central back panel and on hood to ensure maximum breathability and excellent fit. Polartec® Alpha 50 g/m2 insulation for warmth. Inner lining to wick away moisture and eliminate damp feeling against skin.

FEATURES

- YKK® front zip for faster opening.
- Wind flap with zip garage.
- Two front pockets with YKK® zippers.
- Lightweight hood in Sensitive® fabric.
- Draw cord at bottom.
- Trim at sleeve ends and bottom.
- Reflective inserts on back.

410
SKY CAPTAIN/INSIGNIA BLUE



168
DARK GREY/BLACK 



476
BLUEBIRD/BLACK



068
BLACK/DARK GREY



/2500877 

LAVAREDO W VEST

WEIGHT_ 87 gr

FIT_SLIM

SIZE_XS-2XL

DWR

FABRICS

Sensitive
CHOREN

K-DRY



INSULATION

1



WATER PROTECTION

0



WIND PROTECTION

3



BREATHABILITY

4



PACKABLE

4

102

BLACK/WHITE



FABRIC

- Windproof fabric with DWR treatment on front, with controlled airflow to increase breathability. Sensitive® Plus 117 g. fabric at bottom in front and on side panels for excellent fit. Printed fabric on back.

FEATURES

- YKK® front zip.
- Two front zippered pockets.
- Shaped collar.
- Elastic trim on bottom and armholes.
- Internal stuff sack.
- Reflective inserts on back.

410

SKY CAPTAIN/INSIGNIA BLUE



LAVAREDO W JERSEY

WEIGHT_ 72 gr

FIT_SLIM

SIZE_XS - 2XL

##

FABRICS_

Sensitive

K-SENSE



FABRIC

- Made with Sensitive® Plus 117 g. fabric on front. Sleeves in perforated Sensitive® fabric for excellent comfort. Back and side panels made with breathable and quick-drying fabric.

FEATURES

- Ergonomic cut for maximum freedom of movement.
- Reflective inserts on back.
- No labels on inside back of neck to eliminate irritation.
- Raglan sleeves for improved movement while running.

102
BLACK/WHITE



100
BLACK/BLUEBIRD



553
CABARET/BLACK





QUICK W TOP

WEIGHT_ 62 gr

FIT_SLIM

SIZE_XS-2XL

##

FABRICS

Sensitive
FABRIC

K-SENSE



FABRIC

- Made with Sensitive® Plus 130 g. fabric on front and perforated Sensitive® on back for maximum breathability and coolness.

FEATURES

- Elastic trim on neckline and armholes.
- Reflective inserts on back.
- Relaxed fit.

153
BLACK/CABARET



002
BLACK

/2500873 

QUICK EVO BRA

WEIGHT_ 52 gr

FIT_ SLIM

SIZE_ XS - 2XL

##

FABRICS_

Sensitive
K-SENSE

K-SENSE



076
BLUEBIRD



FABRIC

- Made with Sensitive® Plus 130 g. fabric in front and perforated Sensitive® on back to ensure maximum breathability and coolness.

FEATURES

- Logo elastic trim.
- Double fabric on bust.
- Perforated fabric on back.



PIAN DI CENGIA W T-SHIRT

WEIGHT_ 85 gr
FIT_LOOSE
SIZE_XS - 2XL

FABRICS
K-SENSE



FABRIC

- T-shirt made with lightweight, stretchy and breathable fabric, suitable for any outdoor summer activity.

FEATURES

- Bonded sleeve ends to eliminate irritating seams.
- Panel at bottom.

553
BLACK/CABARET



076
BLUEBIRD/BLACK



/2500892

PIAN DI CENGIA W TANK

WEIGHT_ 108 gr
FIT_LOOSE
SIZE_XS - 2XL

FABRICS_
K-SENSE



101
WHITE/BLACK



FABRIC

- Tank top made with lightweight, stretchy and breathable fabric, suitable for any type of outdoor activity.

FEATURES

- Inner supportive bra.
- Slits on side seams and in back.

 /2500941

TRE CIME W PANT

WEIGHT_ 202 gr
FIT_SLIM
SIZE_38-52
DWR
FABRICS
K-STRETCH

002
BLACK



FABRIC

- Pant made of two-way stretch nylon fabric for excellent abrasion resistance; lightweight and breathable for warmer conditions, with a DWR treatment for water repellency. The yoke at the waist and the back part of the lower leg are made of a very lightweight, soft and stretchy DWR-treated fabric for a perfect fit in any situation.

FEATURES

- Marled elastic at waist.
- Zippered front fly.
- Draw cord inside waistband.
- Yoke at waist in lightweight fabric to improve fit.
- Two front zippered pockets.

410
SKY CAPTAIN/BLUEBIRD



202
BLACK/DARK GREY



553
BLACK/CABARET



410
SKY CAPTAIN/BUEBIRD



/2500945 

QUICK W PANT

WEIGHT_ 186 gr

FIT_ SLIM

SIZE_ XS - 2XL

#

FABRICS_

Sensitive
CAPTAIN



INSULATION

1



WATER PROTECTION

0



WIND PROTECTION

0



BREATHABILITY

5



PACKABLE

5

553
BLACK/CABARET



FABRIC

- Made with Sensitive Fit on the upper part, Sensitive Sculpt Light on the lower leg and perforated Sensitive on the back of the knee.

FEATURES

- Snug fit.
- Small zippered side pocket.

QUICK EVO W 3/4 PANT

WEIGHT_ 145 gr

FIT_SLIM

SIZE_XXS - 2XL

##

FABRICS

Sensitive
CLOTHING

K-SENSE



FABRIC

- Made with Sensitive® Sculpt 220 g. fabric for muscle compression. Mesh at bottom for greater breathability and improved fit.

FEATURES

- Elastic waist with flat draw cord.
- Four-needle stitching.
- Back pocket with zip.
- Two open back pockets for gel.
- Reflective inserts on back.

366
INSIGNIA BLUE/BUEBIRD



/2501073 

410
SKY CAPITAN



FAST EVO W SHORT

WEIGHT_ 90 gr
FIT_ SLIM
SIZE_ XS-2XL
DWR
FABRICS
K-STRETCH
KOOL MESH



FABRIC

- Made with two types of outer fabric that are extremely lightweight, soft and quick drying. The front fabric has a DWR treatment that helps repel water and mud. Part of the fabric on the sides and back is perforated to significantly increase breathability.

FEATURES

- Elastic waist. Internal draw cord.
- 1 back pocket with zip. Built-in brief.
- Reflective logo on side.

002
BLACK



002
BLACK



/2500537 

FAST W SHORT

WEIGHT_ 69 gr
FIT_ SLIM
SIZE_ XS-2XL
DWR
FABRICS
K-STRETCH
KOOL MESH



FABRIC

- Made with K-Stretch with DWR finish to help repel water and dirt from the surface of the fabric. The stretch fabric is cool and lightweight. Highstretch crotch insert. Inner short in Kool Mesh designed for maximum freedom of movement and breathability.

FEATURES

- Elastic waist with flat draw cord.
- Four-needle stitching.
- Back pocket with zip.
- Two open back pockets for gel.
- Reflective inserts on back.

403
DRESDEN BLUE



N/2501100

TRE CIME W BERMUDA

WEIGHT_ 157 gr
FIT_SLIM
SIZE_38-52
DWR
FABRICS
K-STRETCH



202
BLACK/DARK GREY



FABRIC

- Short made with a very lightweight, soft and stretchy DWR-treated fabric to ensure excellent fit and breathability for any summer activity.

FEATURES

- Elastic with marled finish at waist.
- Draw cord at waist.
- Yoke with lightweight fabric for improved fit at waist.
- 2 front zippered pockets.

410
SKY CAPTAIN/BLUEBIRD



553
BLACK/CABARET





LAVAREDO RUN SKIRT

WEIGHT_ 105 gr

FIT_SLIM

SIZE_XXS - 2XL

##

FABRICS

Sensitive
RUN



FABRIC

- Made with Sensitive® Plus 130g. fabric.

FEATURES

- Elastic waist.
- Small back pocket with zip.
- Quick-opening front pocket.
- Underwear liner.
- Breathable fabric on sides.
- Reflective inserts on back.

410
SKY CAPTAIN



476
BLUEBIRD PINK FLUO



168
DARK GREY BLACK



/2500889

PIAN DI CENGIA SKIRT

WEIGHT_ 97 gr
FIT_ SLIM
SIZE_ XXS - 2XL

FABRICS_
K-STRETCH

Sensitive
SKIN



476
BLUEBIRD



FABRIC

- Made with breathable two-way stretch marled fabric that is very soft to the touch.

FEATURES

- Elastic waist.
- Small back pocket with zip.
- Quick-opening front pocket.
- Underwear liner.
- Breathable fabric on sides.
- Reflective inserts on back.



LOT RAIN W JACKET

WEIGHT_ 180 gr
FIT_REGULAR
SIZE_XS-2XL
STRATEGIC
20000 DWR
FABRICS
K-DRY



FABRIC

- Extremely lightweight 2.5-layer 100% nylon fabric, 50g per square meter, with a 20,000mm water column and 20,000g/m²/24h breathability. The DWR treatment helps repel water and dirt from the surface of the jacket. Made with waterproof YKK® zippers. The tape used for sealing the seams is 15mm for improved breathability and lighter weight.

FEATURES

- Hood with visor and wind seal around face with adjustable draw cord in back.
- Waterproof YKK® front zipper with 3mm chain to minimize weight.
- Waterproof flap behind zipper with garage.
- Two front pockets with waterproof zips.
- Back pocket with double slider on zip to enable use as stuff sack.
- Chest strap with button to limit opening when jacket is unzipped.
- Adjustable draw cord at bottom of jacket.
- Adjustable Velcro at wrists.

410
SKY CAPTAIN/INSIGNIA BLUE



561
PARADISE PINK/BLACK



168
DARK GREY/BLACK



/2501075 

LOT EVOW JACKET

WEIGHT_ 190 gr
FIT_ SLIM
SIZE_ XS - 2XL
DWR
FABRICS_
K-SENSE



410
SKY CAPTAIN



FABRIC

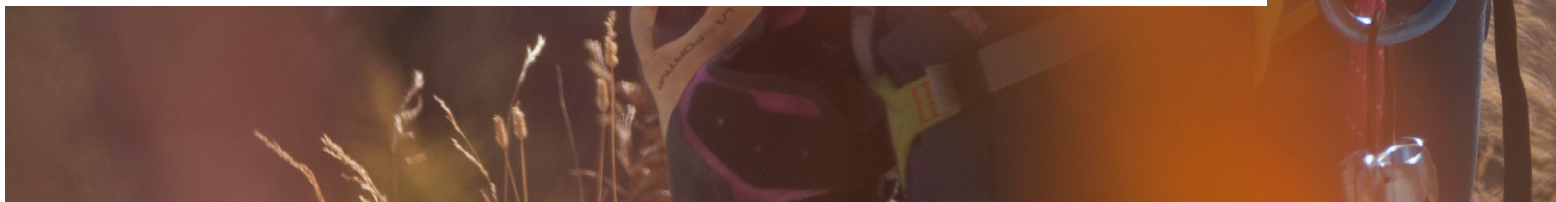
- Windproof fabric with DWR treatment, with controlled airflow to increase breathability, on the front, back, hood and sleeves. Side panels and bottom panel in Sensitive® Plus 117 g fabric for a perfect fit.

FEATURES

- Simple hood with elastic trim.
- Minimalist front zip.
- 2 front zippered pockets.
- Adjustable draw cord at waist.
- Reflective detailing on left arm.
- Internal stuff sack.



— You can stop because you have to, or you can stop because you want to. Our job is to make it a choice that's dictated by your preferences and not by the limits of your equipment.





SEVERE W

VETTA EVO W JACKET

WEIGHT_ 249 gr
FIT_REGULAR
SIZE_XS-2XL
20000 DWR
FABRICS
K-DRY



FABRIC

- The K-Dry membrane guarantees a 20,000 mm water column with breathability measured at 18,000 g/m²/24 hours. The DWR finish helps repel water and dirt from the fabric surface. The internal 15 mm tape promotes better transpiration and better outward look. All the zippers on this garment are YKK®. It has a technical fit characterised by spare lines, accurately designed to reduce cuts on the garment to a minimum and reduce the taping, the stretch inserts on shoulders and hem increase the freedom of movement.

FEATURES

- The hood is to be worn over the helmet and is adjusted by means of a drawstring at the back.
- The visor is stiff.
- The front zippers are waterproof for increased protection.
- Waterproof flap under the zipper, with fabric chin protection.
- Pockets closed by a waterproof zipper.
- Adjustable drawstring at the hem.
- Sleeve edge adjustment toggle.
- Protected air vent at the back.
- Stuff sack.

109
RASPBERRY/BLACK



476
BLUEBIRD/BLACK



101
WHITE/BLACK

/2500838 

LASTEI EVO LIGHT W JACKET



WEIGHT_ 281 gr
FIT_REGULAR
SIZE_XS-2XL
DWR
FABRICS
K-SHELL

 PERTEX®



409
RASPBERRY/BLACK



FABRIC

- Jacket made with 20-denier Pertex® Quantum fabric with DWR finish to help repel water and dirt from the surface of the garment. Windproof fabric on the front, on the upper sleeves and on the back toward the sides. Highly abrasion-resistant, breathable and stretchy DWR-treated nylon at the bottom, on the lower sleeves, in the central part of the back and on the hood, to increase breathability and improve fit. Synthetic 40 g. insulation.

FEATURES

- Full-length YKK® zip.
- Two front zippered pockets.
- Wind flap behind zipper with zip garage.
- Draw cord at bottom.
- Hood with elastic trim.
- Reflective inserts on back.

DEFENCE EVO W JACKET

WEIGHT_ 344 gr
FIT_ SLIM
SIZE_ XS-2XL
DWR
FABRICS
K-STRETCH



FABRIC

- Elastic and breathable K-Shell jacket reinforced with Cordura® at the elbows, with detachable sleeves. It offers good temperature regulation also in very cold weather. The bi-stretch fabric inserts under the sleeves and back enhance the wearer's freedom of movement. No-slip silicone print on the shoulders. All the zippers on this garment are YKK®.

FEATURES

- Front zipper for quicker opening.
- Windproof flap in the front.
- Two front pockets closed with minimalist zippers.
- Drawstring at the bottom for adjustment.
- Zipper in a different colour to make reassembling the garment easier.

102
BLACK





PARETE W JACKET

WEIGHT_ 358 gr
FIT_REGULAR
SIZE_XS-2XL
DWR
FABRICS
K-SHELL



FABRIC

- Jacket made with wind-resistant, water-repellent and slightly stretchy K-Shell. Embossed outer surface with high abrasion resistance.

FEATURES

- YKK® Vislon® zipper in front for quick opening.
- Wind flap with zip garage.
- Two front zippered pockets.
- Zippered chest pocket.
- Shaped hood.
- Stretch cuffs on sleeves.
- Draw cord at bottom of garment.

101
WHITE/BLACK



366
INSIGNIA BLUE/BUEBIRD



002
BLACK



/2500760 

PARETE W VEST

WEIGHT_ 212 gr
FIT_REGULAR
SIZE_XS - 2XL

FABRICS
K-SHELL



INSULATION
2



WATER PROTECTION
2



WIND PROTECTION
4



BREATHABILITY
5



PACKABLE
2

168
DARK GREY/BLACK



FABRIC

- Vest in wind-resistant, water-repellent and slightly stretchy K-Shell. Embossed outer surface with high abrasion resistance.

FEATURES

- Shaped collar for increased comfort.
- YKK® Vislon® zipper for rapid opening.
- Wind flap.
- Two front zippered pockets.
- Draw cord and elastic trim at bottom of garment.
- Four-needle stitching for increased comfort.
- Karpos wordmark printed on back..

PIZZOCCO W FLEECE

WEIGHT_ 312 gr
FIT_ REGULAR
SIZE_ XS-2XL

FABRICS
THERMO FLEECE



FABRIC

- Fleece made with Thermo Fleece fabric, which has a checked structure on the inside that increases insulation and makes the garment lighter weight. Open-weave fabric on the sides, underside of sleeves and center back to increase breathability.

FEATURES

- Full-zip fleece with YKK® zipper.
- Two front zippered pockets.
- Zip garage.
- Elastic trim on bottom of garment, ends of sleeves and collar.
- Logo printed on back.

168
DARK GREY/BLACK



410
SKY CAPTAIN



476
BLUEBIRD/INSIGNIA BLUE



553
CABARET



476
BLUEBIRD/DARK GREY

/2500882 

BREEZYW FLEECE

WEIGHT_ 352 gr
FIT_REGULAR
SIZE_XS - 2XL

FABRICS
THERMO FLEECE



517
LEAD GREY/DARK GREY



FABRIC

- Made with lightweight Thermo Fleece with a marled finish. Ideal for moderate temperatures. Highly abrasion resistant.

FEATURES

- Full-length YKK® zipper.
- Two front zippered pockets.
- Shaped hood in stretch fabric.
- Four-needle stitching.

561
PARADISE PINK/DARK GREY



AVERAU W FLEECE

WEIGHT_ 408 gr
FIT_REGULAR
SIZE_XS-2XL
FABRICS
THERMO FLEECE



FABRIC

- Fleece made with medium-weight Thermo Fleece, ideal for any summer outdoor activities.

FEATURES

- Full-length YKK® zip.
- Shaped hood.
- Two front pockets with invisible zips.
- Zip garage.
- Stretch trim at bottom of fleece and on ends of sleeves.

366
INSIGNIA BLUE



476
BLUEBIRD



168
DARK GREY/BLACK



/2500952 

NUVOLAU W FLEECE

WEIGHT_ 308 gr
FIT_REGULAR
SIZE_XS - 2XL

FABRICS
THERMO FLEECE



510
SKY CAPTAIN/INSIGNIA BLUE



FABRIC

- Fleece made with medium-weight Thermo Fleece, ideal for any summer outdoor activities.

FEATURES

- Full-length YKK® zip.
- Shaped hood.
- Two front pockets with invisible zips.
- Zip garage.
- Stretch trim at bottom of fleece and on ends of sleeves.

553
CABARET/DARK GREY



CRODA DA LAGO W HOODIE FLEECE

WEIGHT_ 372 gr
FIT_ REGULAR
SIZE_ XS-2XL

FABRICS
THERMO FLEECE



FABRIC

- Fleece made with medium-weight Thermo Fleece, ideal for any summer outdoor activities.

FEATURES

- No front zip.
- Shaped hood with draw cord.
- Two open front pockets.
- Cuffs at sleeve ends.

476
BLUEBIRD



561
PARADISE PINK



102
BLACK/WHITE

/2500834 

EASYGOING W JACKET

WEIGHT_ 262 gr

FIT_ SLIM

SIZE_ XS - 2XL

#

FABRICS_

Sensitive
POWER



410
SKY CAPTAIN

FABRIC

- Made with Sensitive Power 230 g. fabric, which offers maximum freedom of movement and allows garments to hold their shape well. The honeycomb fabric texture promotes air circulation and quick drying. High UV protection.

FEATURES

- YKK® front zip.
- Two front pockets with invisible zippers.
- Perforated Sensitive® fabric cuffs on sleeves.
- Shaped collar.



553
BLACK/CABARET



POMEDES W T-SHIRT LS

WEIGHT_ 254 gr
FIT_ REGULAR
SIZE_ XS-2XL
FABRICS
THERMO FLEECE



FABRIC

- Very soft and comfortable fabric. Perfect for any outdoor excursion. The comb stitching gives the garment a fresh and innovative look.

FEATURES

- Full-length front zip.
- Two front zippered pocket.
- Comb stitching to reduce chafing.

410
SKY CAPTAIN





MOVED EVO W JERSEY

WEIGHT_ 73 gr

FIT_ SLIM

SIZE_ XS- 2XL

#

FABRICS

POLARTEC®
Delta

Polygiene®
Silver EcoLine



INSULATION

1



WATER PROTECTION

0



WIND PROTECTION

0



BREATHABILITY

5



PACKABLE

5

476

BLUEBIRD/INSIGNIA BLUE



FABRIC

- Made with Polartec® Delta with a two-color mesh design, this fabric helps maintain a constant body temperature even during intense heat. The sleeves are made with a highly breathable ultralightweight fabric that dries quickly. Very soft to the touch for total comfort during physical activity. Polygiene® treatment prevents the growth of microorganisms such as bacteria and fungi that cause unpleasant odors.

FEATURES

- Printed on body of jersey.
- Trim on neckline.
- Polygiene® treatment.

553

CABARET/BLACK



RAVALLES W JERSEY

WEIGHT_ 104 gr

FIT_LOOSE

SIZE_XS-2XL

##

FABRICS

K-SENSE



Polygiene®
STAYS FRESH



INSULATION
1



WATER PROTECTION
0



WIND PROTECTION
0



BREATHABILITY
5



PACKABLE
5



FABRIC

- Made with a stretchy, breathable fabric and Polygiene® treatment to prevent the growth of microorganisms such as bacteria and fungi that cause unpleasant odors.

FEATURES

- Elastic trim on collar.
- Polygiene® treatment.
- Relaxed fit.

485
AQUIFER



561
PARADISE PINK



154
ORNGE POP./BLUEBIRD/INSIGNIA BL



/2500958

CIMA UNDICI W JERSEY

WEIGHT_ 84 gr
FIT_ REGULAR
SIZE_ XS-2XL

FABRICS
K-SENSE



INSULATION
1



WATER PROTECTION
0



WIND PROTECTION
0



BREATHABILITY
5



PACKABLE
5

182
PINK FLUO/BLACK/WHITE



FABRIC

- Made with a stretchy, breathable fabric and Polygiene® treatment to prevent the growth of microorganisms such as bacteria and fungi that cause unpleasant odors.

FEATURES

- Asymmetrical neckline.
- Elastic trim on collar.
- Polygiene® treatment.

178
VIBRANT YELLOW/INSIGNIA B/WHIT



476
BLUEBIRD/INSIGNIA BLUE





002
BLACK/WHITE



/2500960

SASSONGHER W JERSEY

WEIGHT_ 73 gr
FIT_REGULAR
SIZE_XS-2XL

FABRICS
K-SENSE



INSULATION
1



WATER PROTECTION
0



WIND PROTECTION
1



BREATHABILITY
5



PACKABLE
5

485

AQUIFER/INSIGNIA BLUE



FABRIC

- Made with two types of fabric: soft, stretchy and breathable on the upper front and side panels, and lighter-weight and more breathable polypropylene in the areas of greatest perspiration. Polygiene® treatment prevents the growth of microorganisms such as bacteria and fungi that cause unpleasant odors.

FEATURES

- Elastic trim.
- Polygiene® treatment.

410

SKY CAPTAIN/ORANGE FLUO



561

PARADISE PINK/DARK GREY



GIRALBA W JERSEY

WEIGHT_ 90 gr

FIT_ REGULAR

SIZE_ XS-2XL

##

FABRICS

K-SENSE



Polygiene®

STAYS FRESH



INSULATION

1



WATER PROTECTION

0



WIND PROTECTION

0



BREATHABILITY

5



PACKABLE

5



FABRIC

- Made with a stretchy, breathable fabric and Polygiene® treatment to prevent the growth of microorganisms such as bacteria and fungi that cause unpleasant odors.

FEATURES

- V-neck.
- Elastic trim on collar.
- Polygiene® treatment.

154

ORANGE POPSICLE/WHITE



476

BLUEBIRD/INSIGNIA BLUE



178

VIBRANT YELLOW/BLUEBIRD



002
BLACK



/2500970 

ALTA VIA W JERSEY

WEIGHT_ 87 gr

FIT_REGULAR

SIZE_XS-2XL

#

FABRICS

K-SENSE



INSULATION

1



WATER PROTECTION

0



WIND PROTECTION

1



BREATHABILITY

5



PACKABLE

5



410
SKY CAPTAIN

476
BLUEBIRD



FABRIC

- Made with a stretchy, breathable fabric and Polygiene® treatment to prevent the growth of microorganisms such as bacteria and fungi that cause unpleasant odors.

FEATURES

- Collar finished with invisible seams to prevent irritation.
- Polygiene® treatment.

517
LEAD GREY

553
CABARET



LOMA W JERSEY

WEIGHT_ 65 gr
FIT_REGULAR
SIZE_XS-2XL

FABRICS
K-SENSE



FABRIC

- Made of K-Sense fabric with elastic stitching for enhanced freedom of movement.

FEATURES

- Collar finished with a hidden seam to avoid uncomfortable rubbing.
- Print on the back.

101
WHITE



410
SKY CAPTAIN



182
PINK FLUO



389
PEACOCK GREEN



168
DARK GREY



455
MOROCCAN BLUE



476
BLUEBIRD/RASPBERRY



154
ORANGE POPSICLE



553
CABARET



RAVALLES W TANK

WEIGHT_ 67 gr

FIT_LOOSE

SIZE_XS-2XL

##

FABRICS

K-SENSE



Polygiene®
STAYS FRESH



INSULATION

1



WATER PROTECTION

0



WIND PROTECTION

0



BREATHABILITY

5



PACKABLE

5



FABRIC

- Made with a stretchy, breathable fabric and Polygiene® treatment to prevent the growth of microorganisms such as bacteria and fungi that cause unpleasant odors.

FEATURES

- Relaxed fit.
- Large armholes.
- Polygiene® treatment.

485
AQUIFER



561
PARADISE PINK



002
BLACK

/2501099 

LOMA W TOP

WEIGHT_ 50 gr
FIT_ REGULAR
SIZE_ XS-2XL
FABRICS
K-SENSE



389
PEACOCK GREEN



410
SKY CAPTAIN



FABRIC

- Made with two-way stretch K-Sense with a wicking treatment for improved moisture management and freedom of movement.

FEATURES

- Narrow shoulder straps.
- Logo printed on back.
- Relaxed fit.

476
BLUEBIRD



553
CABARET



BULL SUN W TOP

WEIGHT_ 83 gr
FIT_ SLIM
SIZE_ XS-2XL
EXTRA BENEFITS WICKING
FABRICS
K-SENSE



FABRIC

- Made with K-Sense two-way stretch fabric for freedom of movement and a wicking treatment to move moisture away from the skin.

FEATURES

- Narrow shoulder straps.
- Logo printed on back.

476
BLUEBIRD



168
DARK GREY/RASPBERRY



553
CABARET





RAMEZZA LIGHT W PANT

WEIGHT_ 295 gr
FIT_REGULAR
SIZE_38-52

FABRICS
K-STRECH PLUS



FABRIC

- Made with the innovative mid-weight K-Stretch Plus fabric with two-way stretch and DWR treatment that helps repel water and dirt from the surface. Cordura® fibers with Free Shape technology are used in areas most subject to abrasion.

FEATURES

- Button fly with hook inside.
- Two front zippered pockets.
- Open side pockets.
- Cordura® in areas most subject to abrasion.

102
BLACK/LEAD GREY



366
INSIGNIA BLUE





ROCK W PANT

WEIGHT_ 308 gr
FIT_REGULAR
SIZE_ 38-52
DWR
FABRICS
K-STRECTH
KORTEC



102
BLACK



168
DARK GREY/BLACK



FABRIC

- Made with K-Stretch fabric with DWR treatment to help repel water and dirt from the surface of the fabric. Kortec reinforcements at the bottom for greater wear resistance. Upper front and lower back in one-way stretch fabric. Two-way stretch fabric on knee and back. The crotch design allows for great freedom of movement. All the zippers are YKK®.

FEATURES

- Elastic waistband with logo elastic on the inside, adjustable with a stretch draw cord on the outside.
- Pockets with Vislon® zip with garage for faster opening.
- Invisible zip to open front flap.
- Elastic gripper at bottom of pant.
- Reflective detailing.

410
SKY CAPTAIN



476
BLUEBIRD/BLACK



409
RASPBERRY/BLACK/DARK GREY



FUTURA W PANT

#WEIGHT_ 296 gr
#FIT_REGULAR
#SIZE_38-52
#DWR
#FABRICS
K-STRETCH



002
BLACK/DARK GREY



FABRIC

- Made with cool, soft K-Stretch fabric with two-way stretch. Highly resistant to wear and tear, thanks to its nylon composition.

FEATURES

- Button fly.
- Adjustable draw cord inside.
- Two open front pockets.
- Two open back pockets.
- Cuff at bottom of leg.
- Elastic inserts at waist.

888
INSIGNIA BLUE



999
BLACK/RASPBERRY



002
BLACK/DARK GREY



/2500965

DOLADA W PANT

WEIGHT_ 245 gr
FIT_ REGULAR
SIZE_ 38-52
DWR
FABRICS
K-STRECTH



092
HARBOR MIST/DARK GREY



FABRIC

- Made with abrasion-resistant ripstop nylon with a water-repellent treatment. Two-way stretch fabric provides excellent fit and softness against the skin.

FEATURES

- Button and Velcro fly closure.
- Two open front pockets.
- Draw cord inside waistband.
- Two open back pockets.
- Stretch yoke at waist for improved fit.

510
SKY CAPTAIN/BLUEBIRD



168
DARK GREY/PARADISE PINK



FANTASIA EVO W PANT

WEIGHT_ 238 gr
FIT_SLIM
SIZE_38-52
DWR
FABRICS
K-STRETCH

002
BLACK



FABRIC

- Made of K-Stretch fabric with a DWR finish that helps repel water and dirt from the surface. Single-fabric garment. The design of the crotch insert makes for full freedom of movement. All the zippers on this garment are YKK®.

FEATURES

- Zippered fly, logo elastic at the waist.
- Pockets with zipper.
- Belt loops.
- Reflective inserts.

202
BLACK/CABARET



410
SKY CAPTAIN



476
BLUEBIRD



561
PARADISE PINK



100
BLACK/WHITE



/2500833

EASYGOING W PANT

WEIGHT_ 244 gr
FIT_ REGULAR
SIZE_ XS - 2XL

FABRICS

Sensitive
POWER 230 g.



410
SKY CAPTAIN



FABRIC

- Made with Sensitive® Power 230 g. fabric, which offers maximum freedom of movement and allows garments to hold their shape well. The honeycomb fabric texture promotes air circulation and quick drying. High UV protection.

FEATURES

- Elastic waist.
- Wide waistband.
- Side pocket with invisible zipper.
- Cuff at bottom of leg.

553
BLACK/CABARET



EASY W PANT

#WEIGHT_ 208 gr
#FIT_REGULAR
#SIZE_XXS -2XL

#FABRICS_

Sensitive
POWER



FABRIC

- Made with Sensitive® Power 230 g. fabric, which offers maximum freedom of movement and allows garments to hold their shape well. The honeycomb fabric texture promotes air circulation and quick drying. High UV protection.

FEATURES

- Elastic waist.
- Wide waistband.
- Side pocket with invisible zipper.

533
BLACK/CABARET



002
BLACK/DARK GREY



/2501081 

SANTA CROCE W ZIP-OFF PANT

WEIGHT_ 290 gr
FIT_ REGULAR
SIZE_ 38-52

FABRICS



410
SKY CAPTAIN/BLUEBIRD



FABRIC

- Made with two types of two-way stretch fabric for freedom of movement and elasticity, with DWR treatment.

FEATURES

- 2 zippered front pockets.
- Button fly.
- Belt loops.
- Zip at knee to convert pant to short.
- Side zip from knee to ankle, to allow conversion to short without removing shoes.

 /2500835

002
BLACK

FANES W 3/4 PANT

#WEIGHT_ 147 gr
#FIT_SLIM
#SIZE_XS - 2XL

#FABRICS_
SENSITIVE®



FABRIC

- Made with very stretchy Sensitive® Fit fabric with high UV protection and good abrasion resistance.

FEATURES

- Logo elastic waistband.
- Four-needle stitching on back of garment.
- Reflective inserts on back.

410
SKY CAPTAIN



002
BLACK



/2500775 

FANTASIA 3/4 W PANT

WEIGHT_ 168 gr
FIT_ SLIM
SIZE_ 38-52
DWR
FABRICS
K-STRECH



FABRIC

- Made with K-Stretch fabrics with a DWR treatment to
- help repel water and dirt from the surface. All zippers
- are YKK®.

FEATURES

- Zippered fly with snap.
- Belt loops.
- Two open front pockets.
- Small side zippered pocket.
- Shaped knee for ease of movement.

168
DARK GREY/BLACK



ROCK W BERMUDA

WEIGHT_ 160 gr
FIT_SLIM
SIZE_38-52
DWR
FABRICS
K-STRECH



FABRIC

- Made with K-Stretch with DWR treatment to help repel water and dirt from the surface of the fabric. Upper front in one-way stretch fabric. Two-way stretch fabric on knee and back. Kortec insert on side. The crotch design allows for great freedom of movement. All the zippers are YKK®.

FEATURES

- Elastic waistband with logo elastic on the inside, adjustable with a stretch draw cord on the outside.
- Reflective detailing.

102
BLACK



476
BLUEBIRD/BLACK



410
SKY CAPTAIN



561
PARADISE PINK/BLACK



002
BLACK/DARK GREY



/2500980 

DOLADA W BERMUDA

WEIGHT_ 160 gr
FIT_ REGULAR
SIZE_ 38-52
DWR
FABRICS
K-STRETCH



510
SKY CAPTAIN/BLUEBIRD



FABRIC

- Made with abrasion-resistant ripstop nylon with a water-repellent treatment. Two-way stretch fabric provides excellent fit and softness against the skin.

FEATURES

- Button and Velcro fly closure.
- Draw cord inside waistband.
- Stretch yoke at waist for improved fit.
- Two open front pockets.
- One open back pocket.
- One zippered back pocket.

 /2500946

100
BLACK/WHITE

EASYGOING W BERMUDA

WEIGHT_ 129 gr

FIT_REGULAR

SIZE_XS-2XL

##

FABRICS

Sensitive
POWER



FABRIC

- Made with Sensitive® Power 230 g. fabric, which offers maximum freedom of movement and allows garments to hold their shape well. The honeycomb fabric texture promotes air circulation and quick drying. High UV protection.

FEATURES

- Elastic waist.
- Wide waistband.
- Side pocket with invisible zipper.

410
SKY CAPTAIN/BLUEBIRD



553
BLACK/CABARET



002
BLACK/DARK GREY

/2501083 

SANTA CROCE W SHORT

WEIGHT_ 135 gr
FIT_ REGULAR
SIZE_ 38-52
DWR
FABRICS
K-STRETCH



102
BLACK/CABARET



FABRIC

- Made with two types of two-way stretch fabric for freedom of movement and elasticity, with DWR treatment.

FEATURES

- Button fly.
- Belt loops.
- 2 open front pockets.

410
SKY CAPTAIN/BLUEBIRD





Show the world that you are someone who lives and breathes the mountains, and that you live them with a certain style. If performance is your lifestyle, then always bring beauty with you.





ADVENTURE BIKE

 /2500851

002
BLACK/DARK GREY



JUMP JERSEY LS

WEIGHT_ 150gr
FIT_REGULAR
SIZE_S-3XL

FABRICS
K-SENSE



INSULATION
1



WATER PROTECTION
0



WIND PROTECTION
1



BREATHABILITY
5



PACKABLE
3



FABRIC

- Made with two types of fabric. One, with extremely high stretch, is used on the sleeves for improved fit and freedom of movement, and the other, a highly breathable perforated fabric, is used for the rest of the jersey to keep you cool on your rides.

FEATURES

- Mesh crew neck.
- Our-needle stitching.
- Large back pocket with invisible zipper.
- Small inside pocket for accessories.
- Reflective inserts.

087
BLACK/GREEN FLUO



002
BLACK/DARK GREY



/2500967 

VERVE TEE

WEIGHT_ 131 gr
FIT_ REGULAR
SIZE_ S-3XL

FABRICS
K-SENSE



087
BLACK/GREEN FLUO



FABRIC

- Made with two types of fabric. One, with extremely high stretch, is used on the sleeves for improved fit and freedom of movement, and the other, a highly breathable perforated fabric, is used for the rest of the jersey to keep you cool on your rides.

FEATURES

- Mesh crew neck.
- Four-needle stitching.
- Large back pocket with invisible zipper.
- Small inside pocket.
- Reflective logos.

440
INDIGO BUNTING



 /2500828

002
BLACK/DARK GREY



PRALONGIA JERSEY

WEIGHT_ 130 gr

FIT_REGULAR

SIZE_S-3XL

##

FABRICS

K-SENSE

Sensitive
FABRIC



INSULATION

1



WATER PROTECTION

0



WIND PROTECTION

0



BREATHABILITY

5



PACKABLE

5



FABRIC

- Made with Sensitive® Plus fabric on the front and highly breathable fabric on the back and side panels for improved breathability and fit.

FEATURES

- Full-length YKK® front zip with garage.
- Bonded sleeve ends and jersey bottom.
- Silicone logo elastic at bottom of jersey.
- Back pocket with invisible zip and small pocket inside.
- Reflective logos on back.

410
SKY CAPTAIN/INDIGO BUNTING



087
BLACK/GREEN FLUO



/2500883

JUMP JERSEY

WEIGHT_ 135gr
FIT_REGULAR
SIZE_S-3XL

FABRICS
K-SENSE



091
BLACK/YELLOW FLUO



FABRIC

- Made with two types of fabric: a breathable perforated fabric under the sleeves for improved evaporation of sweat and on the back for increased comfort, including when wearing a backpack, and a soft, highly stretchy fabric on the front.

FEATURES

- Full-length YKK® front zipper with zip garage.
- Logo elastic with silicone at bottom of jersey.
- Three open invisible back pockets, with key pocket inside.
- Reflective inserts.

819
BLACK/TANGERINE TANGO



GREEN FIRE JERSEY

WEIGHT_ 135gr
FIT_REGULAR
SIZE_S-3XL

FABRICS
K-SENSE



FABRIC

- Printed jersey made with stretchy and breathable fabric.

FEATURES

- Full-length front YKK® zip with garage.
- Logo elastic with silicone at bottom of jersey.
- 3 invisible open pockets on back, with small inside pocket.
- Reflective logo.

440
BLACK/INDIGO BUNTING



187
BLACK/GREEN FLUO



366
SKY CAPTAIN/INSIGNIA BLUE



002
BLACK

/2501084 

VAL FEDERIA TEE

WEIGHT_ 94 gr
FIT_REGULAR
SIZE_S-3XL

FABRICS
K-SENSE



168
DARK GREY



FABRIC

- Made with cool, stretchy and comfortable K-Sense fabric.

FEATURES

- Invisible stitching at neck.
- Printed on front and back.

002
BLACK

187
GREEN FLUO



455
MOROCCAN BLUE

187
GREEN FLUO



168
DARK GREY

455
MOROCCAN BLUE



VAL MORA TEE

WEIGHT_ 130gr
FIT_REGULAR
SIZE_S-3XL

FABRICS
K-SENSE



FABRIC

- Made with stretchy and breathable fabric. Polygiene® treatment prevents the proliferation of microorganisms such as bacteria and fungi that cause unpleasant odors.

FEATURES

- Invisible stitching at neck.
- Printed on front.

440 INDIGO BUNTING





JUMP SHORT

WEIGHT_ 270 gr
FIT_REGULAR
SIZE_S-3XL
DWR
FABRICS
K-STRECTH



FABRIC

- Made with two K-Stretch fabrics with DWR treatment that helps repel water and dirt from the surface. The more durable two-way-stretch ripstop is used on the upper part of the short and the inside of the legs. The smooth fabric is used on the front and back to ensure outstanding fit, breathability and comfort.

FEATURES

- Zippered fly with two buttons inside.
- Front zippered pocket.
- Side zips with internal gussets to allow use with protective gear.
- Velcro adjustment of elastic at waist.
- Two open back pockets.
- Reflective inserts on back.

314
APPLE GREEN/BLACK



102
BLACK/DARK GREY/GREEN FLUO



/2500680

RAPID BAGGY SHORT

WEIGHT_ 188 gr
FIT_ REGULAR
SIZE_ S-3XL
DWR
FABRICS
K-STRETCH



INSULATION
2



WATER PROTECTION
2



WIND PROTECTION
3



BREATHABILITY
3



PACKABLE
4

202

BLACK/DARK GREY/TANGERINE TANGO



FABRIC

- Made of two DWR-finished K-Stretch fabrics that help repel water and dirt from the fabric surface. The first stretch fabric has a smooth, cool and light appearance, and the second is a two-waystretch ripstop fabric for complete freedom of movement. This garment has two YKK® zippers.

FEATURES

- Zippered fly with an internal hook to avoid points of entanglement outside.
- Two front pockets with a minimalist zipper and mesh inside that can also be used for ventilation.
- A back pocket with a minimalist zipper.
- Front flapless zipper for faster opening, internal flap.
- Adjustable elastic band at the waist.
- Reflective inserts.

455

MOROCCAN BLUE/BLACK



299

BLUETTE/BLACK



VAL VIOLA SHORT

#WEIGHT_ 175 gr
#FIT_REGULAR
#SIZE_S-3XL
#DWR
#FABRICS
K-STRECHT



FABRIC

- Made with K-Stretch fabric with DWR treatment to repel water and dirt from the surface. Two-way-stretch ripstop fabric for full freedom of movement. Two YKK® zips.

FEATURES

- Zippered fly with internal hook so there's nothing to catch on outside.
- Zippered pocket on thigh.
- Quick-opening front zip with flap inside and braided trim outside.
- Adjustable elastic at waist.
- Reflective detailing.

187
GREEN FLUO /BLACK



410
SKY CAPTAIN/INSIGNIA BLUE



440
INDIGO BUNTING /BLACK



819
TANGERINE TANGO /BLACK





BALLISTIC EVO SHORT

#WEIGHT_ 184 gr
#FIT_REGULAR
#SIZE_S-3XL
#DWR
#FABRICS
K-STRECTH



FABRIC

- Made of two DWR-finished K-Stretch fabrics that help repel water and dirt from the fabric surface. The first stretch fabric has a smooth, cool and light appearance, the second is a bi-stretch rip-stop fabric for complete freedom of movement. This garment has two YKK® zippers.

FEATURES

- Open waist construction with easy to open zip and internal clousure hook to limit outer fastners.
- Open front pockets with a soft trim.
- Front flapless zipper for faster opening, internal flap
- Adjustable elastic band at the waist.
- Reflective inserts.

168
DARK GREY/BLACK



202
BLACK/DARK GREY/ORANGE FLUO



299
BLUETTE/BLACK/GREEN FLUO



302
BLACK/DARK GREY/INDIGO B.



314
APPLE GREEN/BLACK



102
BLACK/DARK GREY/GREEN FLUO



VERVE EVO BIBSHORT

#WEIGHT_ 140 gr
#FIT_SLIM
#SIZE_S-3XL
#DWR
#FABRICS
K-STRECTH



FABRIC

- Made with high-compression Sensitive® Sculpt 220 g fabric on the inside part and embossed fabric on the rest of the bibshort. BodyFit Pro Adventure seat pad. The seams are made with comb stitching to reduce thickness and provide a fresh new look.

FEATURES

- Ergonomic cut for excellent fit.
- 7 cm high compression elastic on leg ending with silicone printing on inside and reflectivity printed around entire circumference.
- Perforated, printed and shaped bib straps.
- Raw-cut mesh panels for cooling around waist.
- BodyFit Pro Adventure seat pad.



187
DARK GREY/BLACK/GREEN FLUO



366
INSIGNIA BLUE/YELLOW FLUO



002
BLACK



/2500693

PRO-TECT INNER PANT

WEIGHT_ 135 gr
FIT_ SLIM
SIZE_ S-3XL

FABRICS
KOOL MESH



BODYFIT PRO ADVENTURE

094
GREEN



FABRIC

- Made of mesh-effect two way stretch fabric to provide maximum freedom of movement and excellent breathability. Bodyfit Pro Adventure seat pad.

FEATURES

- Logo elastic waistband.
- Designed to be able to be worn under the adventure bike shorts.

002
BLACK



/2501115

PADDED BOXER

WEIGHT_ 120 gr
FIT_ SLIM
SIZE_ S-3XL

FABRICS
Sensitive



FABRIC

- Made with Sensitive® Plus 117 g fabric to ensure maximum breathability, quick drying and excellent fit.

FEATURES

- Logo Elastic waistband.
- Ergonomic Seat Pad.

N/2501111

087
GREEN FLUO

VERVE MESH SLEEVELESS

WEIGHT_ 58 gr

FIT_SLIM

SIZE_S-3XL

##

FABRICS

K-SENSE

Sensitive
FABRIC



INSULATION

0



WATER PROTECTION

0



WIND PROTECTION

0



BREATHABILITY

5



PACKABLE

5



FABRIC

- Made with stretchy, soft and breathable fabric.

FEATURES

- No tags inside collar for greatest comfort.
- Sewn-on trim at armholes and neck.

440
INDIGO BUNTING







Show the world that you are someone who lives and breathes the mountains, and that you live them with a certain style. If performance is your lifestyle, then always bring beauty with you.





ADVENTURE BIKE W

PRALONGIA W JERSEY

WEIGHT_ 95 gr

FIT_REGULAR

SIZE_XS-2XL

##

FABRICS

K-SENSE

Sensitive
FABRICS



INSULATION

1



WATER PROTECTION

0



WIND PROTECTION

0



BREATHABILITY

5



PACKABLE

5



FABRIC

- Made with Sensitive® Plus fabric on the front and highly breathable fabric on the back and side panels for improved breathability and fit.

FEATURES

- Full-length YKK® front zip with garage.
- Bonded sleeve ends.
- Two open back pockets.
- Two open side pockets.

389

PEACOCK GREEN/BAYBERRY



410

SKY CAPTAIN/INSIGNIA BLUE



389
PEACOCK GREEN/BAYBERRY



/2501096 

VERVE EVO W JERSEY

WEIGHT_ 105 gr
FIT_ REGULAR
SIZE_ XS-XXL

FABRICS
K-SENSE



476
BLUEBIRD/SKY CAPTAIN



FABRIC

- Printed jersey made with stretchy and breathable fabric.

FEATURES

- Full-length front YKK® zip with garage.
- 2 open pockets on back.
- Reflective logo.

553
CABARET/BLACK





VERVE W TEE

WEIGHT_ 96 gr
FIT_REGULAR
SIZE_XS-2XL

FABRICS
K-STRETCH



INSULATION
1



WATER PROTECTION
0



WIND PROTECTION
1



BREATHABILITY
5



PACKABLE
3



FABRIC

- Soft, breathable and stretchy marled fabric.

FEATURES

- Low crew neck.
- Small zippered pocket on side at back.

410
SKY CAPTAIN/BLUEBIRD



553
BLACK/CABARET



476
BLUEBIRD/SKY CAPTAIN



/2501053 

VERVE EVO W SLEEVELESS

WEIGHT_ 99 gr
FIT_ SLIM
SIZE_ XS- XXL

FABRICS
K-SENSE



1



0



0



5



3

553
CABARET/BLACK



FABRIC

- Printed sleeveless jersey made with stretchy and breathable fabric.

FEATURES

- Full-length front YKK® zip with garage.
- 2 open pockets on back.
- Reflective logo.

VAL FEDERIA W TEE

WEIGHT_ 57 gr
FIT_REGULAR
SIZE_XS-2XL

FABRICS
K-STRETCH



FABRIC

- Made with cool, stretchy and comfortable K-Sense fabric.

FEATURES

- Invisible stitching at neck.
- Printed on back.

476
BLUEBIRD





N/2501089

002
BLACK/DARK GREY

VAL VIOLA W SHORT

#WEIGHT_ 160 gr
#FIT_REGULAR
#SIZE_XS-XXL
#DWR
#FABRICS
K-STRECTH



FABRIC

- Made with K-Stretch fabric with DWR treatment to repel water and dirt from the surface. Two-way-stretch ripstop fabric for full freedom of movement. Two YKK® zips.

FEATURES

- Zippered fly with internal hook so there's nothing to catch on outside.
- Zippered pocket on thigh.
- Quick-opening front zip with flap inside and braided trim outside.
- Adjustable elastic at waist.
- Reflective detailing.

352
BAYBERRY



476
BLUEBIRD/SKY CAPTAIN



002
BLACK



/2500683

BALLISTIC EVO W SHORT

WEIGHT_ 147 gr
FIT_REGULAR
SIZE_XS-2XL
DWR
FABRICS
K-STRETCH



168
DARK GREY



FABRIC

- Made of two K-Stretch fabrics with a DWR finish to help repel water and dirt from the surface. The first stretch fabric has a smooth, cool and light appearance, and the second is a two-way-stretch ripstop fabric for complete freedom of movement. This garment has two YKK® zippers.

FEATURES

- Zippered fly with an internal hook to avoid points of entanglement outside.
- Front pockets with minimalist zippers.
- Front flapless zipper for faster opening, internal flap.
- Adjustable elastic band at the waist.
- Reflective inserts.

553
CABARET/BLACK



410
SKY CAPTAIN



VERVE EVO SHORT

#WEIGHT_ 140 gr
#FIT_SLIM
#SIZE_XS-XXL
#DWR
#FABRICS
K-STRECTH



366
INSIGNIA BLUE/BUEBIRD



FABRIC

- Made with high-compression Sensitive® Sculpt 220 g fabric. BodyFit Pro Adventure seat pad. The seams are made with comb stitching to reduce thickness and provide a fresh new look.

FEATURES

- Ergonomic cut for excellent fit.
- 7 cm high compression elastic on leg ending with silicone printing on inside and reflectivity printed around entire circumference.
- BodyFit Pro Adventure seat pad.

389
BLACK/PEACOCK GREEN



553
BLACK/CABARET



002
BLACK



/2500694

PRO-TECT INNER W PANT

WEIGHT_ 113 gr
FIT_ SLIM
SIZE_ XS-2XL

FABRICS
KOOL MESH



BODYFIT PRO ADVENTURE

094
GREEN



FABRIC

- Made of mesh-effect two way stretch fabric to provide maximum freedom of movement and excellent breathability. Bodyfit Pro Adventure seat pad.

FEATURES

- Logo elastic waistband.
- Designed to be able to be worn under the adventure bike shorts.

002
BLACK



/2501116

PADED W BOXER

WEIGHT_ 115 gr
FIT_ SLIM
SIZE_ S-3XL

FABRICS
Sensitive



FABRIC

- Made with Sensitive® Plus 117 g fabric to ensure maximum breathability, quick drying and excellent fit.

FEATURES

- Logo Elastic waistband.
- Ergonomic Seat Pad.

VERVE MESH W SLEEVELESS

WEIGHT_ 45 gr
FIT_SLIM
SIZE_XS-XXL
DWR
FABRICS
K-STRECTH



FABRIC

- Made with stretchy, soft and breathable fabric.

FEATURES

- No tags inside collar for greatest comfort.
- Sewn-on trim at armholes and neck.

476
BLUEBIRD/SKY CAPTAIN



553
BLACK/CABARET





ACCESSORIES

 /2500999

002
BLACK/GREEN FLUO

LAVAREDO GLOVE

WEIGHT
FIT_
SIZE_XS-2XL

FABRICS
K-STRETCH



FABRIC

- Made with lightweight, soft and breathable fabric.
- Convertible finger cover in lightweight windproof fabric.

FEATURES

- Windproof finger cover stashes on back.
- Touchscreen-compatible thumb, forefinger and middle finger.
- Cuff with trim.

 /2500990

002
BLACK/GREEN FLUO

LAVAREDO RAIN MITT

WEIGHT
FIT_
SIZE_XS-2XL

FABRICS
K-DRY



FABRIC

- Made with waterproof fabric with a 10,000 mm water column and 10,000 g/m2/24h breathability.

FEATURES

- Fully seam sealed.
- Elastic and draw cord at wrist.

114
APPLE GREEN/INDIGO BUNTING

299
BLUETTE/ORANGE FLUO

/2500794

RAPID GLOVE



WEIGHT
FIT_
SIZE_XS-2XL

FABRICS
KOOL MESH



FABRIC

- Made with highly breathable, lightweight and durable fabrics.

FEATURES

- Back in mesh with Karpos printed in silicone.
- Additional protection on index and middle fingers.
- Touchscreen insert on thumb.
- Silicone on palm.
- Perforated palm for greater breathability.
- Ultrasuede® reinforcement between thumb and index finger.
- Elastic cuff at wrist.

168
DARK GREY/GREEN

182
PINK FLUO/ BLACK



114
APPLE GREEN/INDIGO BUNTING

299
BLUETTE/ORANGE FLUO

/2500795

RAPID 1/2 FINGERS GLOVE



WEIGHT
FIT_
SIZE_XS-2XL

FABRICS
KOOL MESH



168
DARK GREY/GREEN

182
PINK FLUO/ BLACK



FABRIC

- Made with highly breathable, lightweight and durable fabrics.

FEATURES

- Back in mesh with Karpos printed in silicone.
- Silicone on palm.
- Perforated palm for greater breathability.
- Ultrasuede® reinforcement between thumb and index finger.
- Elastic cuff at wrist.

 /2500972

092
BLACK/KARPOS GREEN

CATTA CAP

WEIGHT_
FIT_
SIZE_UNI

FABRICS



FEATURES

- Six-panel cap with visor.
- Stretchy sweatband.
- Adjustable back closure.

 /2500981

LONGERES CAP

WEIGHT_
FIT_
SIZE_UNI

FABRICS

006
MULTICOLOR

002
BLACK/GREEN/DARK GREY

476
BLACK/BLUEBIRD/BLACK



FABRIC

- Made with lightweight printed merino wool.

FEATURES

- Rigid but easily foldable visor.
- Printed tubular body of cap.

 /2500871

LAVAREDO CAP

WEIGHT_
FIT_
SIZE_UNI

FABRICS

Sensitive
FABRIC

002
BLACK

101
WHITE/BLACK



187
GREEN FLUO/BLACK

476
BLUEBIRD/BLACK



553
CABARET/BLACK



FABRIC

- Made with Sensitive Plus fabric.

FEATURES

- Rigid but easily foldable visor.
- Body of cap in lightweight fabric and mesh.
- Draw cord on back for adjustment.

LAVAREDO VISOR

187
GREEN FLUO



002
BLACK



WEIGHT_
FIT_
SIZE_UNI

FABRICS

Sensitive
FABRICS

FABRIC

- Made with Sensitive Plus fabric.

FEATURES

- Rigid but easily foldable visor.

006
MULTICOLOR



276
SULPHUR SPRING 



009
GREEN FLUO



LAVAREDO HEADBAND

WEIGHT_
FIT_
SIZE_UNI

FABRICS

002
BLACK



352
BAYBERRY 



476
BLUEBIRD



389
PEACOCK GREEN 



440
INDIGO BUNTING 



553
CABARET 



FABRIC

- Made with soft, lightweight fabric.

FEATURES

- All-over print.

 /2501011

CENGIA HEADBAND

WEIGHT_
FIT_
SIZE_UNI

FABRICS

Sensitive
PLUS

FABRIC

- Made with Sensitive Plus fabric.

FEATURES

- Mesh sweatband inside.

168
DARK GREY



187
GREEN FLUO



440
INDIGO BUNTING



476
AZZURRO BAIA



553
CABARET



 /2500732

KARPOS NECK WARMER LIGHT

WEIGHT_
FIT_
SIZE_UNI

FABRICS
100% POLIESTERE
Sensitive
PLUS

002
BLACK MID GREY DARK GREY



403
DRESDEN BLUE BLUETTE BLACK



FEATURES

- Lightweight, versatile piece that can be used as a neck warmer, cap, bandana, balaclava or headband.

002
BLACK/ORNAGE FLUO



091
YELLOW FLUO/GREEN FLUO



/2500778

RAPID SOCK

WEIGHT_
FIT_
SIZE_S-XL

FABRICS
KOOL MESH

182
PINK FLUO/GREEN FLUO



187
GREEN FLUO/YELLOW FLUO



FABRIC

- Very cool and comfortable fabric with a honeycomb texture.

FEATURES

- Reinforced toe and heel.
- Height 9 cm.

168
DARK GREY/ORANGE



187
GREEN FLUO/YELLOW FLUO



/2500968

VERVE SOCKS

WEIGHT_
FIT_
SIZE_S-XL

FABRICS
SILVER PLUS

410
SKY CAPTAIN/YELLOW FLUO



FABRIC

- Yarn made with antibacterial SilverPlus treatment.

FEATURES

- 14 cm height.

LAVAREDO SOCKS

WEIGHT_
FIT_
SIZE_S-XL

FABRICS
SKINLIFE



FABRIC

- Made with Meryl Skinlife yarn with antibacterial treatment.

FEATURES

- Reinforced toe and heel.
- Tab at back for ease in pulling on.
- Differentiated zones for increased comfort and decreased chafing.



187
BLACK/GREEN FLUO



/2500798

KARPOS ARM WARMERS

WEIGHT_
FIT_
SIZE_S-XL

FABRICS
THERMODRYTEX PLUS



FABRIC

- High-stretch, breathable fabric, lightly brushed inside.

FEATURES

- Made with four-needle stitching.
- Silicone elastic at top for excellent grip.
- Reflective detailing on back.
- Logo printed on front.

187
BLACK/GREEN FLUO



/2500799

KARPOS LEG WARMERS

WEIGHT_
FIT_
SIZE_S-XL

FABRICS
THERMODRYTEX PLUS



FABRIC

- High-stretch, breathable fabric, lightly brushed inside.

FEATURES

- Made with four-needle stitching.
- Breathable stretch-mesh insert behind knee for increased freedom of movement on the bike.
- Zip at bottom to allow you to put on and take off the leg warmer over your shoe.
- Silicone elastic at top for excellent grip.
- Reflective detailing on back.
- Logo printed on front.

 /2500978

187
GREEN FLUO/YELLOW FLUO

LAVAREDO BOOSTER

WEIGHT_
FIT_
SIZE_ S-XL

FABRICS
SILVER PLUS



CONCEPT

- Yarn made with antibacterial SilverPlus treatment.

FABRIC

- Fil

 /2500998

002
BLACK

LAVAREDO BELT

WEIGHT_
FIT_
SIZE_ S-XL

FABRICS
K-STRETCH



FABRIC

- Made with stretchy, durable fabric.

FEATURES

- Two open side pockets for gels.
- Open front pocket.
- Open back pocket.
- Strap on every pocket to facilitate opening.



BODYFIT PRO ADVENTURE

- Developed for a more upright riding position and occasional walking for our Adventure Bike line, this pad features infinitely variable thickness that puts 13mm of foam under your sit bones but almost no padding along the front and wings, making it ideal while on the bike but less noticeable when off the bike.

KOOL MESH

- Used for the liner in our baggy shorts, our Kool Mesh keeps you cool and comfortable with just the right amount of compression.

K-HARDTEC

- Particularly comfortable, compact and durable fabric for jerseys that stands up to the most challenging tests, such as contact with rocks or Velcro. The ultimate in durability. Particularly comfortable, compact and durable fabric for jerseys that stands up to the most challenging tests, such as contact with rocks or Velcro. The ultimate in durability.

K-SHELL

- A family of tightly woven and stretchy fabrics that offer a high degree of protection from the elements. Depending on their structure, these lightweight and extremely durable fabrics supply sufficient insulation, excellent wind resistance, water repellency or rapid drying, without sacrificing breathability and freedom of movement.

K-SYNTHETIC DOWN MICRO

- Insulation material created using micro-balls of hollow-fiber polyester. As insulation, it is the artificial option most similar to natural down in terms of weight-to-warmth ratio, with several important advantages: it is easy to wash, hygienic, hypoallergenic and breathable, and it does not absorb moisture.

POLARTEC™ DELTA

- Polartec Delta™ fabrics sit in the sweet spot or Goldilocks zone between cotton and polyester. They exhibit a comfortable cooling pattern similar to cotton, but act more like polyester for dry times and maintaining breathability when wet.

SENSITIVE® FABRICS

- Superior Lycra® fabrics that allow for high performance in a wide variety of applications. Garments made with Sensitive® are comfortable and enjoyable to wear, with a very soft hand, and the open weave ensures good breathability for enhanced physical well-being. The garments are practical and durable, maintaining their color and shape through many washings.

CORDURA

- Extremely robust, stretchy and comfortable against the skin, this fabric can protect the parts of a garment that are most prone to wear and tear, without sacrificing freedom of movement and while offering high breathability, including during intense physical activity.

KORTEC

- Two-way-stretch fabric in reinforced ripstop Cordura®; lightweight, very strong and breathable; ideal for reinforcements.

K-SENSE

- Soft to the touch and highly elastic to allow full freedom of movement, these fabrics are characterized by their light weight, durability, high breathability and rapid drying.

K-STRETCH

- Family of fabrics that are extremely lightweight, durable and stretchy and that provide a high degree of airflow and moisture wicking despite being resistant to wind and water. Lightweight protection to ensure comfort during physical activity.

PEERTEX® QUANTUM

- Very lightweight windproof fabric especially developed to contain down. Particularly soft and compactible even though it's very durable.

POLYGIENE Odor Control

- Polygiene is a permanent treatment that is used on fabrics to prevent the proliferation of microorganisms, such as bacteria and fungi, that are responsible for unpleasant odors, so that garments can be used longer and washed less frequently.

THERMO FLEECE

- Fleece offers one of the best weight to warmth ratios. Our different Thermo Fleece fabrics have varying weights but all have great warmth, durability and comfort. Can be used for an outer layer or as a mid insulation layer in more severe winter conditions.

DYNEEMA®

- High-density polyethylene sewing thread. Lightweight and with extremely high tensile, torsional and bending strength. Dyneema® is a registered trademark of DSM.

K-DRY

- The K- Dry family of fabrics are developed to offer protection from wind, rain and wet snow. Different features include lightweight, abrasion resistance, compactability and breathability.

K-SENSE PLUS

- The technological evolution of fabrics that feel soft on the skin and stretch to allow free movement, and are characterised by a different warp, lightness, strength, high breathability and quick drying.

K-STRETCH PLUS

- A revolutionary fabric with an innovative structure: two yarns, one Nylon® and one Cordura®, with different cross sections, are threaded together to form seamless raised bands that provide protection, elasticity and breathability. This is a new frontier of design, a leap forward that joins technology and fantasy to create the product of the future.

POLARTEC® ALPHA

- Polartec® Alpha® is the latest evolution of synthetic insulation offering a rare combination of lightweight warmth and true breathability in a "puffy" style garment. Alpha® creates insulating loft but does not require down proof fabrics, allowing a sandwich construction with mesh and breathable fabrics for performance that's not available in traditional insulation.

PRIMALOFT® SILVER ACTIVE

- Introducing breathable insulation for active lifestyles. Specifically designed to resist migration, the permanent water-repellent ultra-fine fibers in Primaloft® Silver Insulation Active deliver exceptional softness, warmth and loft, along with superior water resistance. This highly-breathable insulation doesn't limit fabric choices, comfort levels or seasons. Introducing breathable insulation for active lifestyles. Specifically designed to resist migration, the permanent water-repellent ultra-fine fibers in Primaloft® Silver Insulation Active deliver exceptional softness, warmth and loft, along with superior water resistance. This highly-breathable insulation doesn't limit fabric choices, comfort levels or seasons.

DISTRIBUTORS

Austria
MVC SPORT VERTRIEBS GmbH
T.+49 (0)8031 2360803
vertrieb@mvc46.eu
www.karpos-outdoor.com

Benelux
POM IMPORT SCRL
T.+328 5253224
atlan@pom-import.be
www.freedom2go.be

Canada
MV CANADA Inc.
T: +1 819 919 2199
mvcanada_service@mvc46.eu
www.karpos-outdoor.com

Czech Republic
ID SPORT S.R.O.
T. +420 311 637 131.
info@idsport.cz
www.idsport.cz

Finland
Max Trading OY
Tel: +358 20 7691970
info@maxtrading.fi

France
PLEIN NORD
T. +33 4 50939271
info@pleinnord.com
www.pleinnord.com

Germany
MVC SPORT VERTRIEBS GmbH
T.+49 (0)8031 2360803
vertrieb@mvc46.eu
www.karpos-outdoor.com

Italy
MANIFATTURA VALCISMON S.p.a
Via Marconi 81/83
32030 Fonzaso (BL)
T. +39 0439 5711
F. +39 0439 56436
info@karpos-outdoor.com
www.karpos-outdoor.com

Israel
ONT ISRAVELO LTD
T. +972 54 533 0046
info@isravelo.com
www.isravelo.com

Poland
KARPOS POLAND, S.R.O.
T. +421 903 600 757
office@karpos-outdoor.pl
www.karpos-outdoor.pl

Slovakia
DAVORIN S.R.O.
T. +421 905 503997
office@davorin.sk
www.davorin.sk

Slovenija
BORA D.O.O
T. +386 56404208
info@bora.si
www.bora.si

South Korea
YG INTERNATIONAL COMPANY
T. +82 29031355
yg2213@hanmail.net

Spain
MANIFATTURA VALCISMON SPAIN
T. +34 972 253 356
M. +34 639 204 523
m.caselli@sportful.com
www.karpos-outdoor.com

Switzerland
NEW ROCK S.A.
T. +41 91 935 14 00
info@newrocksport.ch
www.newrocksport.ch

Manifattura Valcison S.p.A.

via Guglielmo Marconi, 81/83 | 32030 Fonzaso (BL) |

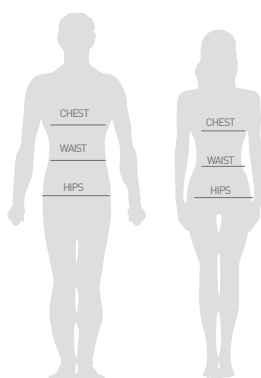
Tel. +39 0439 5711 | Fax +39 0439 56436

www.karpos-outdoor.com

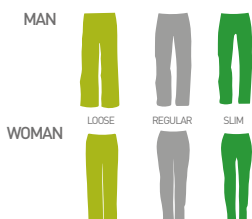
Special thanks to:

Ph.: Gaetano Caberlotto - Manrico Dell'Agnola - Bine Zalolar
Matteo Mocellin Storytellerlabs - Paolo Meitre Libertini -
Paolo Sartori

SIZE CHART



FIT RANGE



MAN	XS	S	M	L	XL	XXL	XXXL
CHEST	44	46	48	50	52	54	56
	88	92	96	100	106	112	118

WOMAN	XS	S	M	L	XL	XXL
CHEST	38	40	42	44	46	48
	79	84	88	94	100	106

PANTS MAN	44	46	48	50	52	54	56	58	60
WAIST	76	80	84	88	92	96	101	106	111
HIPS	90	94	98	102	106	110	113	116	119

PANTS WOMAN	38	40	42	44	46	48	50	52
WAIST	60	64	68	72	76	80	84	88
HIPS	86	90	94	98	102	106	110	114

GLOVE	XS	S	M	L	XL	XXL
INCH SIZE	6	7	8	9	10	11
PALM CIRCUMFERENCE	<17cm	17-20 cm	20-23 cm	23-25 cm	25-27 cm	>27 cm

I	44	46	48	50	52	54	56	58	60
E	44	46	48	50	52	54	56	58	60
F	38	40	42	44	46	48	50	53	54
UK	28	30	32	34	36	38	40	42	44
D	44	46	48	50	52	54	56	58	60

I	38	40	42	44	46	48	50	52
E	34	36	38	40	42	44	46	48
F	34	36	38	40	42	44	46	48
UK	22	24	26	28	30	32	34	36
D	32	34	36	38	40	42	44	46







101

**KARPOS JACKET
HANGER**
2800026



101

**KARPOS PANT
HANGER**
2800002

**KARPOS
PAPER BAG**
2800006

001 50x50 CM



**KARPOS
MEDIUM
PAPER BAG**
2800007

001 32x40 CM



**KARPOS
PENCIL**
2800014

001



**KARPOS PVC
SQUADRE DISPLAY**
2800011

FRONT

BACK



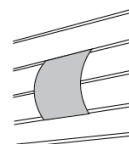
001 20x24 CM

**KARPOS PVC
DISPLAY**
2800012



001 60x24 CM

SLATWALL



POUF KARPOS

2800018

001



**KARPOS
SQUARE WOODEN**

2800013

001



30x37h CM

**KARPOS
LOGO TEE**

2800020

088



**KARPOS
LOGO HOODIE**

2800021

088



**KARPOS
TNT BANNER**
2800016

001 300x80 CM



**KARPOS
RACE STRIP**

2800017

094



**KARPOS
STORE FLAG**
2800005

001



**KARPOS
DEMO FLAG**
2800015

001





FREE TO KEEP GOING

_KARPOS-OUTDOOR.COM_